

AIM:BHL | TSXV:BHLI | OTCQB:BHLIF

# AT THE FOREFRONT OF Li EXPLORATION IN THE USA BATTERY SUPPLY CHAIN

*November 2023*



**BRADDA HEAD**  
— LITHIUM —



The information contained in this document has been prepared by Bradda Head Lithium Limited ("Bradda Head" or the "Company"). It has not been independently verified and is subject to updating, revision and further amendment. This document is approved for the purposes of Section 21 of the FSMA and therefore this document is being delivered for information purposes only. This document does not and is not intended to constitute, and should not be construed as, an offer, inducement, invitation or commitment to purchase, subscribe to, provide or sell any securities, services or products of the Company in any jurisdiction or to provide any recommendations for financial, securities, investment or other advice or to take any decision.

**The information in this document has not been fully verified and is subject to material updating, completion, revision, verification and further amendment. This document contains draft technical information, which includes certain internal estimates made by the Company.**

Beaumont Cornish Limited ("Beaumont Cornish"), which is authorised and regulated in the United Kingdom by the Financial Conduct Authority ("FCA") is acting on behalf of the Company and no other person (whether or not a recipient of this document) and will not be responsible to any person other than the Company for providing the regulatory and legal protections afforded to customers (as defined by the FCA Handbook and Guidance), nor for providing advice in relation to the contents of this document. Beaumont Cornish has not independently verified any of the information within this document. Beaumont Cornish shall not be liable for any direct or indirect damages, including lost profits arising in any way from the information contained in this document.

This document contains certain forward looking statements that involve risks and uncertainties. All statements other than statements of historical facts contained in this document, including statements regarding the Company's future financial position, business strategy and plans, business model and approach and objectives of management for future operations, are forward-looking statements. Generally, the forward-looking statements in this document use words like "anticipate", "believe", "could", "estimate", "expect", "future", "intend", "may", "opportunity", "plan", "potential", "project", "seek", "will" and similar terms.

By their nature, forward-looking statements are subject to numerous risks and uncertainties, some of which are beyond Bradda Head's control, including [the impact of COVID-19, general economic conditions, industry conditions, volatility of commodity prices, currency fluctuations, imprecision of resource estimates, environmental risks, changes in environmental, tax and royalty legislation, competition from other industry participants, the lack of availability of qualified personnel or management, stock market volatility, and ability to access sufficient capital from internal and external sources and those risk factors identified in the Company's publicly filed disclosure documents available at [www.sedar.com](http://www.sedar.com).

The Company's actual results could differ materially from those anticipated in the forward looking statements as a result of many factors. The forward looking statements in these slides and this presentation are based on the beliefs and assumptions of the Company's directors and information only as of the date of this document, and the forward looking events discussed in this document might not occur. Therefore, investors should not place any reliance on any forward looking statements. The Company undertakes no obligation to publicly update any forward looking statements, whether as a result of new information, future earnings, or otherwise. To the extent any forward-looking statements in this document constitute "future-oriented financial information" or "financial outlooks" within the meaning of applicable Canadian securities laws (collectively, "FOFI"), such information is being provided to demonstrate the Company's internal projections and the reader is cautioned that this information may not be appropriate for any other purpose and the reader should not place undue reliance on such FOFI.

Furthermore, this document includes information relating to past performance. Past performance is not an indication of future results.

While the information contained herein has been prepared in good faith, neither Bradda Head or any of their respective subsidiaries, shareholders, directors, officers, agents, employees or advisers give, have given or have authority to give, any representations or warranties (express or implied) as to, or in relation to, the accuracy, reliability or completeness of the information in this document, or any revision thereof, or of any other written or oral information made or to be made available to any interested party or its advisers (all such information being referred to as "Information") and liability therefore is expressly disclaimed. Accordingly, neither Bradda Head or any of their respective shareholders, directors, officers, agents, employees or advisers take any responsibility for, or will accept any liability whether direct or indirect, express or implied, contractual, tortious, statutory or otherwise, in respect of, the accuracy or completeness of the Information or for any of the opinions contained herein or for any errors, omissions or misstatements or for any loss, howsoever arising, from the use of this document. Neither the issue of this document nor any part of its contents is to be taken as any form of commitment on the part of Bradda Head to proceed with any transaction and the right is reserved to terminate any discussions or negotiations with any prospective investors. In no circumstances will Bradda Head be responsible for any costs, losses or expenses incurred in connection with any appraisal or investigation of the Information. In furnishing this document, Bradda Head does not undertake or agree to any obligation to provide the recipient with access to any additional information or to update this document or to correct any inaccuracies in, or omissions from, this document which may become apparent. This document should not be considered as the giving of investment advice Bradda Head or any of their respective shareholders, directors, officers, agents, employees or advisers. Each party to whom this document is made available must make its own independent assessment of the Information after making such investigations and taking such advice as may be deemed necessary. In particular, any estimates or projections or opinions contained herein necessarily involve significant elements of subjective judgment, analysis and assumptions and each recipient should satisfy itself in relation to such matters.

Certain information contained in this document includes market and industry data that has been obtained from or is based on estimates derived from third party sources, including industry publications, reports and websites. Third party sources may state that the information contained therein has been obtained from sources believed to be reliable, but there is no assurance or guarantee as to the accuracy or completeness of included data. Although the data is believed to be reliable, neither the Company nor its agents have independently verify the accuracy, reliability or completeness of any of the information from third party sources referred to in the document or ascertained from the underlying economic assumptions relied upon by such sources. The Company and its agents hereby disclaim any responsibility or liability whatsoever in respect of any third-party sources or market and industry data or information.

Neither this document nor any copy of it may be (a) taken or transmitted into Australia, Japan, South Africa or the United States of America, their territories or possessions; (b) distributed to any U.S. person (as defined in Regulation S under the United States Securities Act of 1933 (as amended)) or (c) distributed to any individual outside Australia or Japan who is a resident thereof in any such case for the purpose of offer for sale or solicitation or invitation to buy or subscribe any securities or in the context where its distribution may be construed as such offer, solicitation or invitation, in any such case except in compliance with any applicable exemption. The distribution of this document in or to persons subject to other jurisdictions may be restricted by law and persons into whose possession this document comes should inform themselves about. The reader understands and acknowledges that no prospectus has been prepared or filed with any securities commission or similar regulatory authority in Canada, and that no securities commission or similar regulatory authority in Canada has made any finding or determination as to the merit for investment in, or made any recommendation or endorsement with respect to, the Company.

The information contained in this presentation has been obtained by Bradda Head from its own records and from other sources deemed reliable, however no representation or warranty is made as to its accuracy or completeness. The technical information related to Bradda Head's material properties disclosed herein is based upon technical reports prepared and filed pursuant to National Instrument 43-101 – Standards of Disclosure for Mineral Projects ("NI 43-101") and other publicly available information regarding the Company, including the INDEPENDENT TECHNICAL REPORT ON THE BASIN AND WIKIEUP LITHIUM CLAY PROJECTS, ARIZONA, USA, and INDEPENDENT TECHNICAL REPORT ON THE SAN DOMINGO LITHIUM PROJECT, ARIZONA, USA, 18 October 2022, Martin Pittuck CEng, FGS, MIMMM. Scientific and technical information contained in this presentation related to the mineral resource estimates have been approved and verified by Martin Pittuck who is a "Qualified Person" in accordance with NI 43-101. The Qualified Person referred to above are independent of Bradda Head.

# Time to Invest in Bradda Head Lithium and the USA Battery Supply Chain

-  Three Li-deposit types; pegmatite, sedimentary (clay), and brine
-  All 100% owned projects, Western USA, proximal to end users
-  Strategy to bridge lithium supply gap for USA domestic users with low carbon footprint
-  Well funded to mid-2024 with US\$3.5m in treasury, durability in tough markets and a clear vision to an additional US\$3.0M due when we reach 2.5MT of LCE on Basin (+/-Wickieup)



**Strategy:** Developing critical USA lithium projects to supply the domestic market



**Bradda Head Lithium**  
Developing Lithium Projects in the USA

# Right Time, Right Place, Right People



## Tier One Political Location

Nevada and Arizona are low risk jurisdictions – ranked #1 and #7 by the Fraser Institute Survey of Mining Companies 2022, **no risk of asset nationalization**



## Board and Management Committed

20% of shares held by Board and Management, belief in business model, committed to discovery, and poised to capture lithium market



## First-rate Local and Regional Infrastructure

Primary assets located in Nevada and Arizona, close to highways and transport links to Gigafactories and developing US battery supply chain



## Reduced Geological Risk

Bradda has three types of lithium assets; pegmatites, clays and brines



## ESG Driven Growth

Implementing community and water conservation initiatives and low-carbon footprint projects is at the core of our development



## Right Time, Right Place, Right People

Significant lithium supply deficits are forecasted, Bradda and its experienced team, strongly supported by the Board, are focused on the USA and investing into the US\$135bn critical minerals supply market chain<sup>(1)</sup>

Source: (1) [www.whitehouse.gov](http://www.whitehouse.gov)

# Experienced Team Driving Growth



**Ian Stalker**  
Executive  
Chairman



**Denham Eke**  
Finance  
Director



**Jim Mellon**  
Non-Executive  
Director



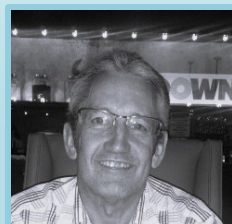
**Alex Borrelli**  
Independent  
NED



**Euan  
Jenkins**  
Independent  
NED



**Piotr Shabak**  
CFO



**Joey Wilkins**  
COO

ESG



**Adam Hawkins, MBA**  
Global External

TECHNICAL



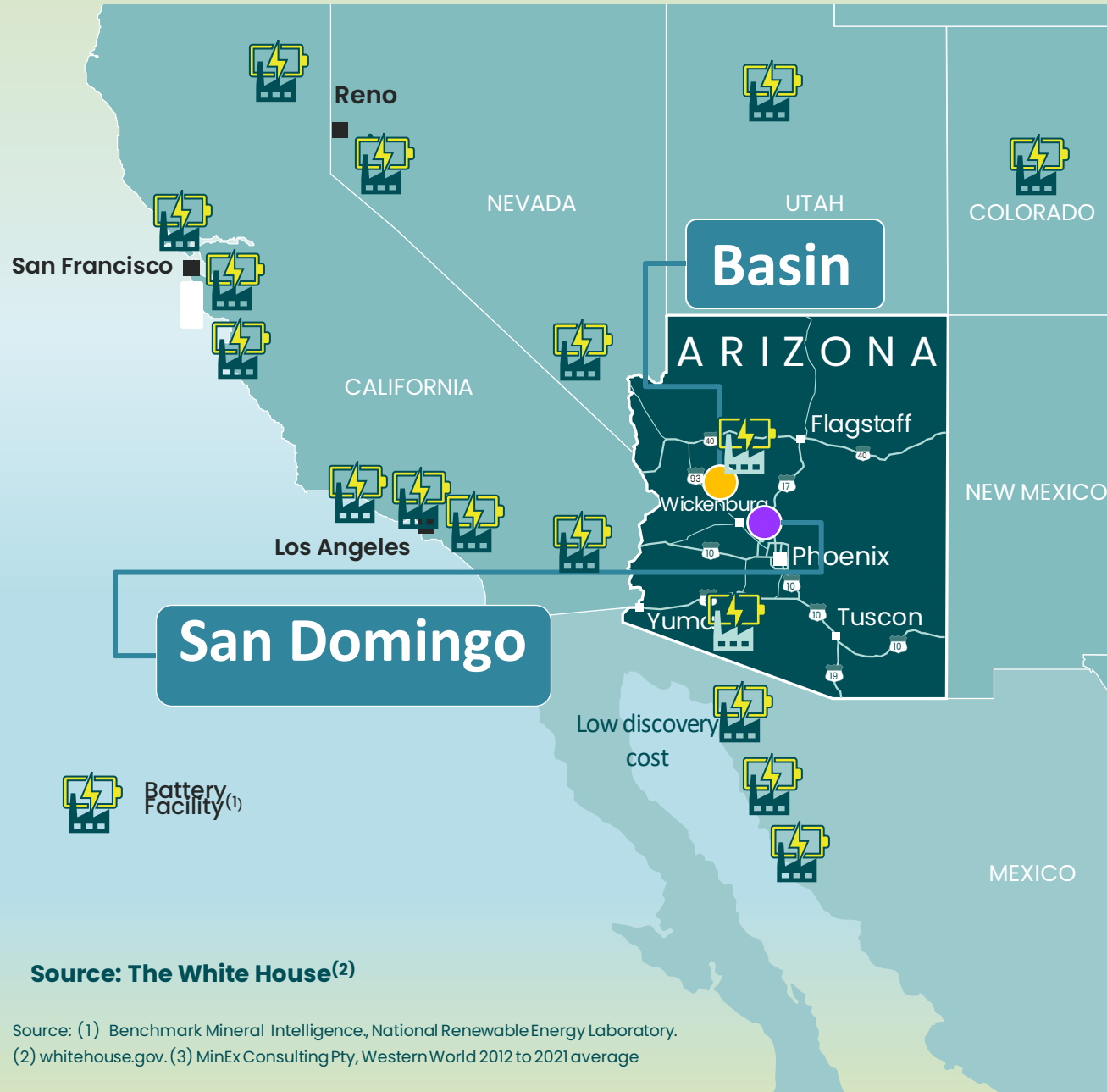
**Don Hains, P.Geo, MBA**  
Technical Consultant



**Dr Yatendra Sharma**  
BSc Hons, MSc, PhD, CChem,  
MRACI, MAusIMM  
Lithium Processing Consultant

Plus a strong operational  
team on the ground in the  
USA driving project growth

# Primary Lithium Growth with Flagship Pegmatite & Clay Assets in Arizona



### San Domingo Project—Pegmatites

**Exploratory Drilling Stage**, 33km<sup>2</sup> Property

**Phase II programme 80%** completed since August, drilling new targets and offsetting Phase I high-grade intercepts

**Phase I drill holes** encountered very encouraging intercepts at Midnight Owl and Jumbo targets, such as:

**32m @ 1.60% Li<sub>2</sub>O in SD-DH22-024 & 9.5m @ 1.85% Li<sub>2</sub>O plus 2.90m at 3.03% Li<sub>2</sub>O SD-DH23-037**

Early stage **Met** work shows 6.0% Li<sub>2</sub>O recovery with ¼" size using HLS and 50.3% recovery

### Basin Project—Clays

**Resource Development** and Expansion Stage

Completed in 2023, 14 sonic drill holes and 2,355m in resounding expansion of resource to northwest

**New Resource of 1.085 Mt LCE** covering only 14% of 17km<sup>2</sup> project, open to east, north, and west. Low dollar discovery cost

1.0 to 4.0MT additional LCE Target Potential per SRK

Notable drill hole Intercepts from 2023 campaign are:

**75m @ 983 ppm Li, with 27.6m @ 1,339ppm in BES23-12 & 67m @ 1,077ppm Li, with 20.74m @ 1,545ppm in BES23-04**

Source: The White House<sup>(2)</sup>

Source: (1) Benchmark Mineral Intelligence, National Renewable Energy Laboratory.  
 (2) whitehouse.gov. (3) MinEx Consulting Pty, Western World 2012 to 2021 average

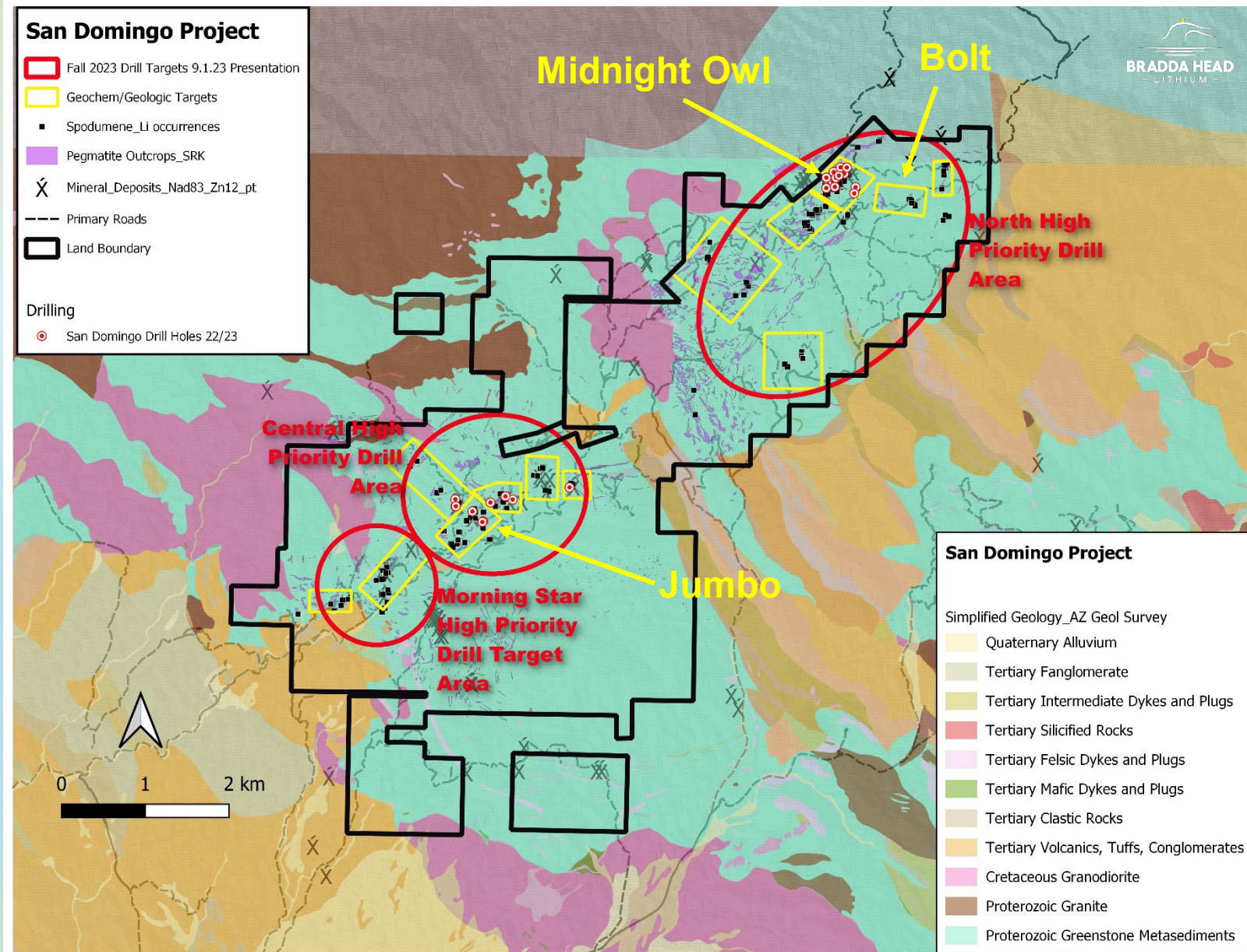
# San Domingo - Developing a World Class Lithium District, Phase 3 Drilling Underway

## Overview:

- **33.6km<sup>2</sup>** land position, 7 historic lithium mines on our claims
- **Li-bearing pegmatite** dykes and sill throughout belt, **greenstone host rock**
- Phase One, 7,300m of drilling completed, shallow (<100m) Li-Intercepts, example is SD-DH22-024 with **32m @ 1.60% Li<sub>2</sub>O**
- Prominent **LCT signature** of L plus, Ta, Rb, & Cs
- **No** environmental or social **roadblocks**, permitting with BLM and State of AZ

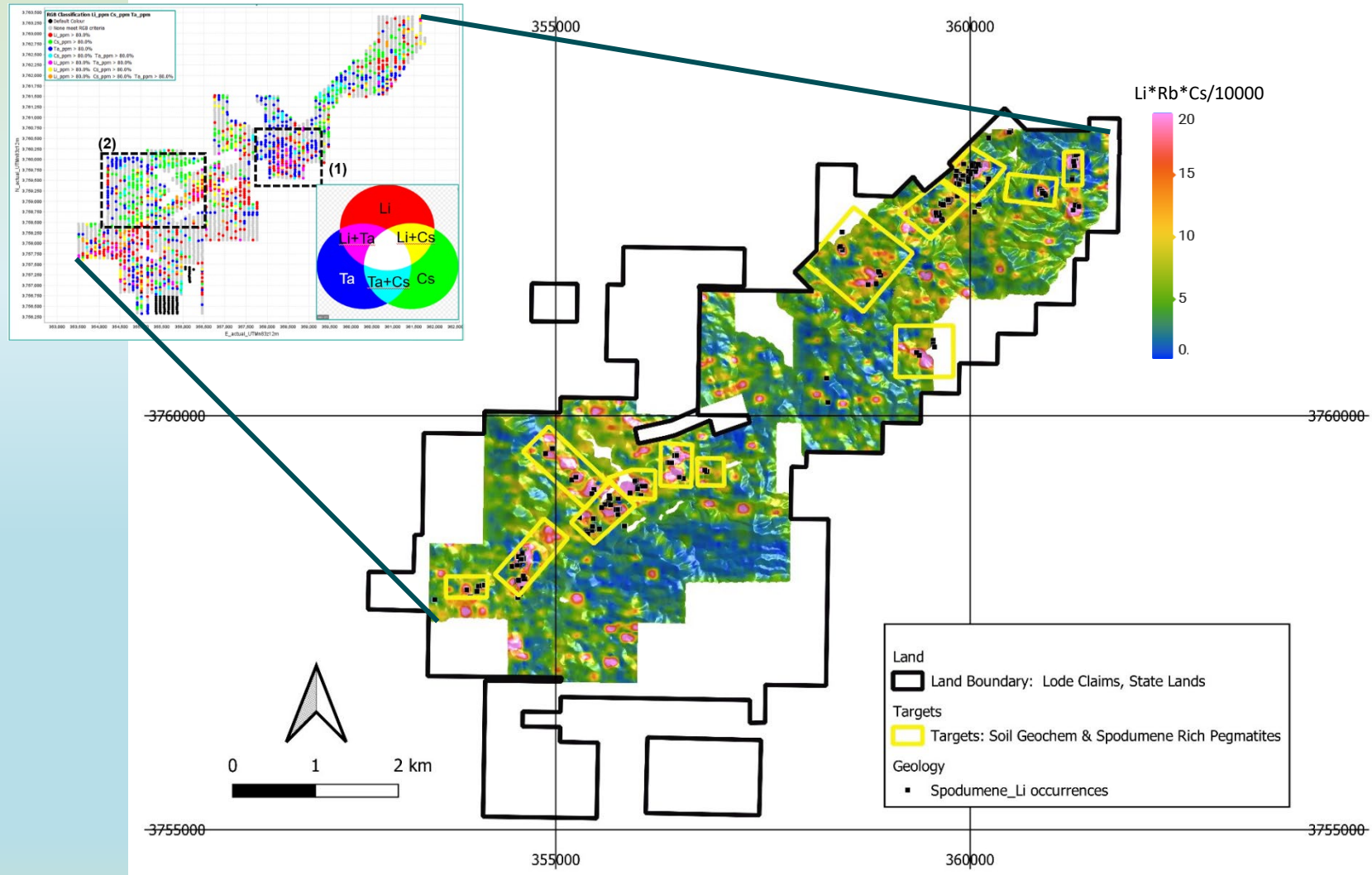
## Ongoing:

- 6,100m core drilling program **80% completed**, testing new targets and following-up on Phase 1 targets with step-out holes
- Initial results at **Bolt** include 5.27m of 0.51% Li<sub>2</sub>O within 24.65m of 0.24% Li<sub>2</sub>O plus 6.35m of 0.83% Li<sub>2</sub>O at **Midnight Owl**, encouraging
- **Metallurgical test** results on Phase 1 drill core from Jumbo target indicate up to 6.0% Li<sub>2</sub>O concentrate with ¼" crush by HLS
- Continue fieldwork on soil anomalies, **expand soil survey** to southeast and northwest
- Reconnaissance-style **shallow RC drilling** program being considered to rapidly test vast number of Li-anomalous pegmatites



# Soil Sample Interrogation Confirms 10.5km LCT Signature Pegmatite Trend

- **3,884** soil samples collected over roughly half the property
- **LCT (lithium-caesium-tantalum)** signature confirmed by Geochem consultant
- Consultant differentiated diverse terrains using P and Mg, identified potential boundaries and **“prospective” host rocks**, aligning with our primary targets and new areas emerged as high priority
- High percentage of Li-Rb-Cs soil anomalies field checked and most contain spodumene or lepidolite-bearing pegmatites: **many anomalies yet to be field examined**
- Additional soil samples collected internally, expanding coverage in the NE, results pending: **Further expansion planned**



## Comparable assets

### Kathleen Valley, Western Australia

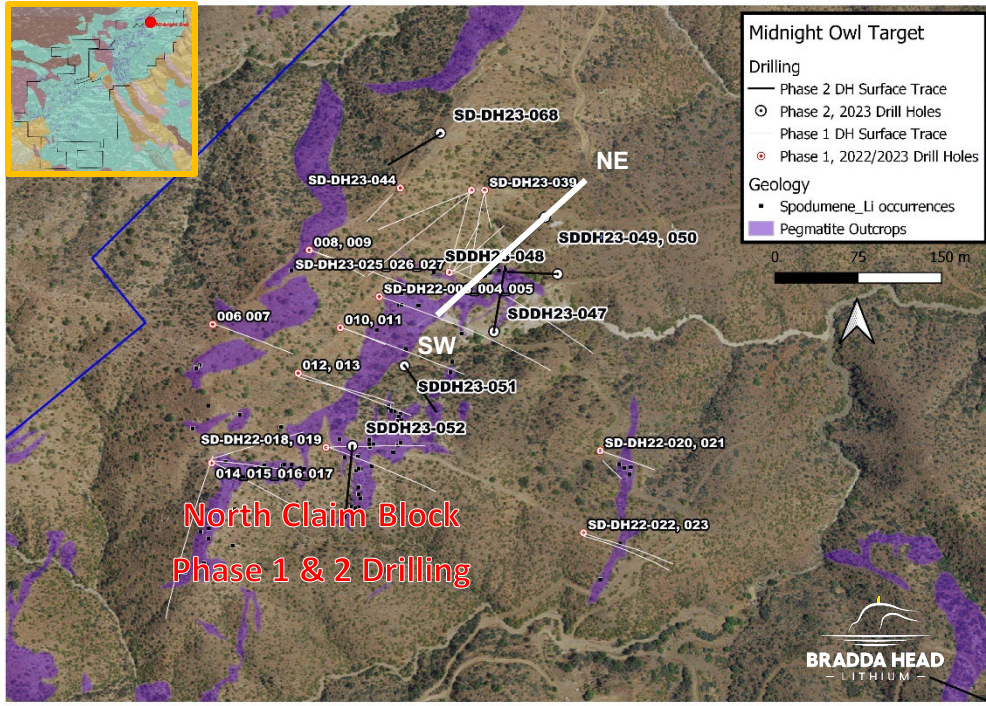
- 1.7km strike, 600m depth
- Resource of 156Mt @ 1.4% Li<sub>2</sub>O and 130ppm Ta<sub>2</sub>O<sub>5</sub>

### Bald Hill, Western Australia

- 1.2km strike, 775m width, 195m depth
- Resource of 26.5Mt @ 1.0% Li<sub>2</sub>O and 149ppm Ta<sub>2</sub>O<sub>5</sub>



# Midnight Owl — Phase 2, Extending Mineralization at Depth

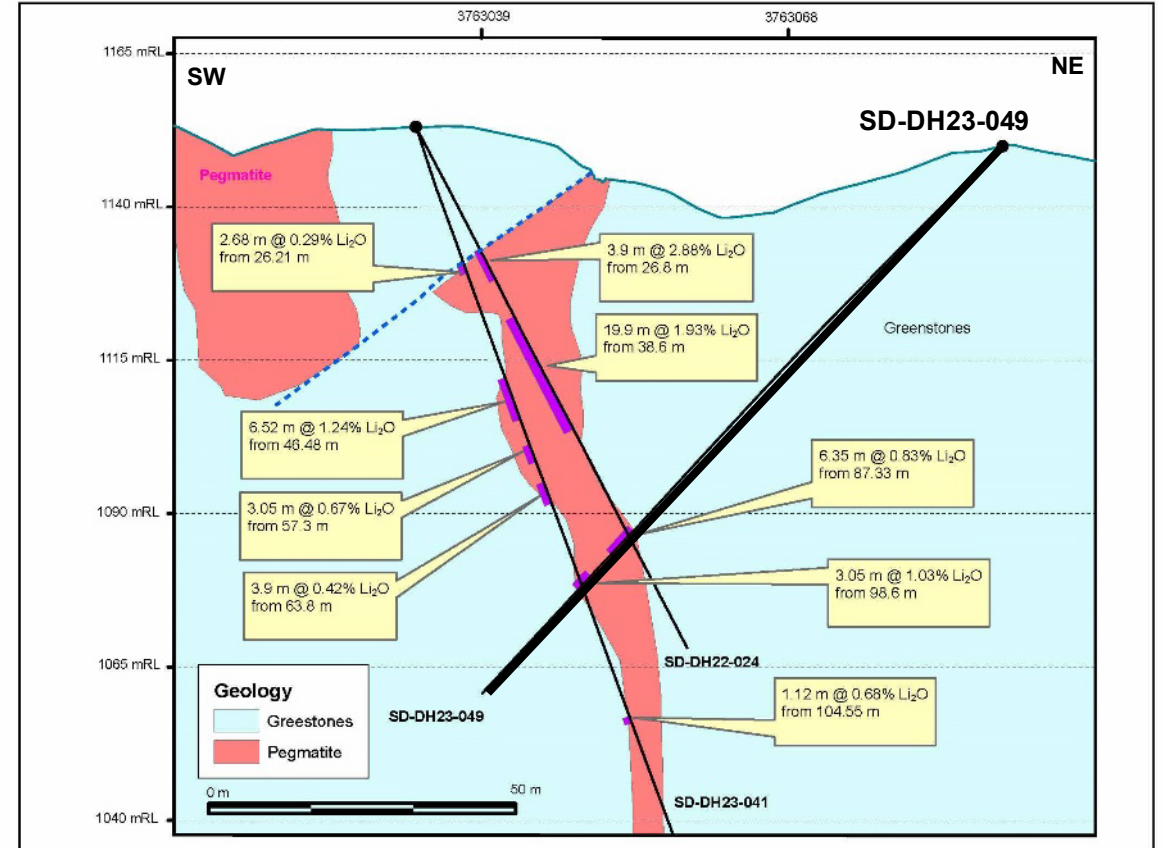


## Phase 1 Highlights:

- 31.85m @ 1.60% Li<sub>2</sub>O in SD-DH22-024
- 6.52m @ 1.24% Li<sub>2</sub>O, and 3.05m @ 0.67% Li<sub>2</sub>O in SD-DH22-041
- 4.27m @ 1.86% Li<sub>2</sub>O in SD-DH22-005
- 2.74m @ 2.12% Li<sub>2</sub>O in SD-DH22-042

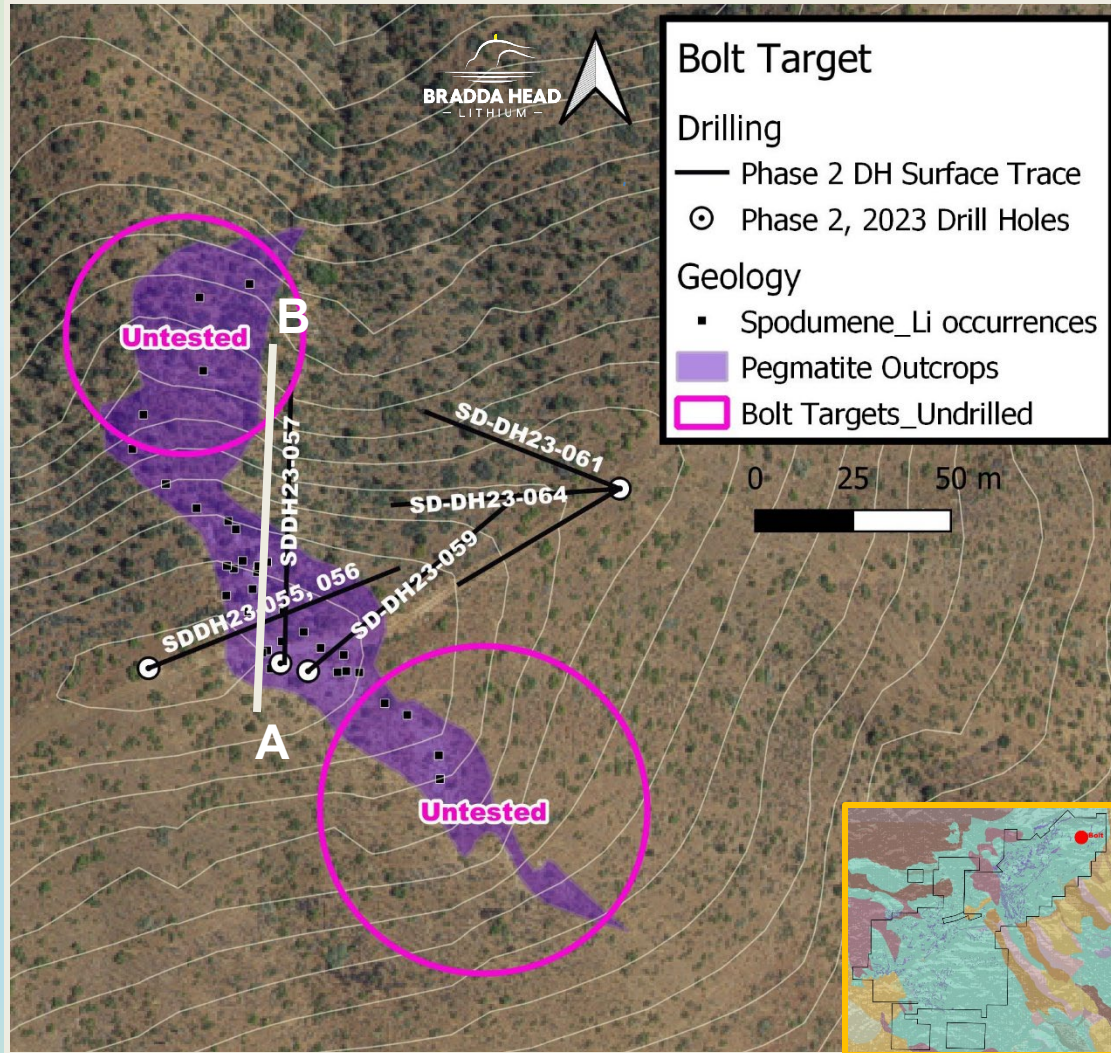
## Phase 2 Highlights:

- 6.35m @ 0.83% Li<sub>2</sub>O followed by 3.05m @ 1.03% Li<sub>2</sub>O in SD-DH23-049
- Including 5.16m of 80 ppm Ta<sub>2</sub>O<sub>5</sub> starting at 89.18m (LCT signature)
- 16.82m @ 73 ppm Ta<sub>2</sub>O<sub>5</sub> with 105ppm Ta<sub>2</sub>O<sub>5</sub> over 9.12m (LCT Signature)



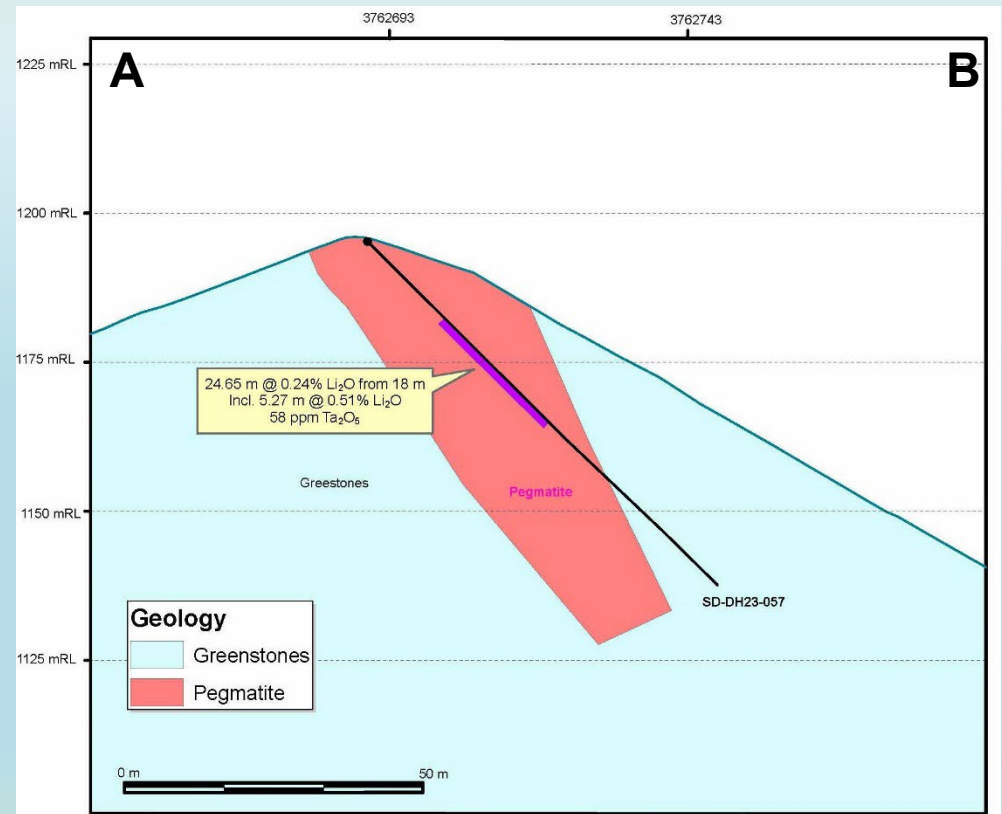
San Domingo – Phase 1 Completed  
Phase 2 Underway

# Bolt Drilling — Phase 2, A New and Undrilled Target, Open to North & South

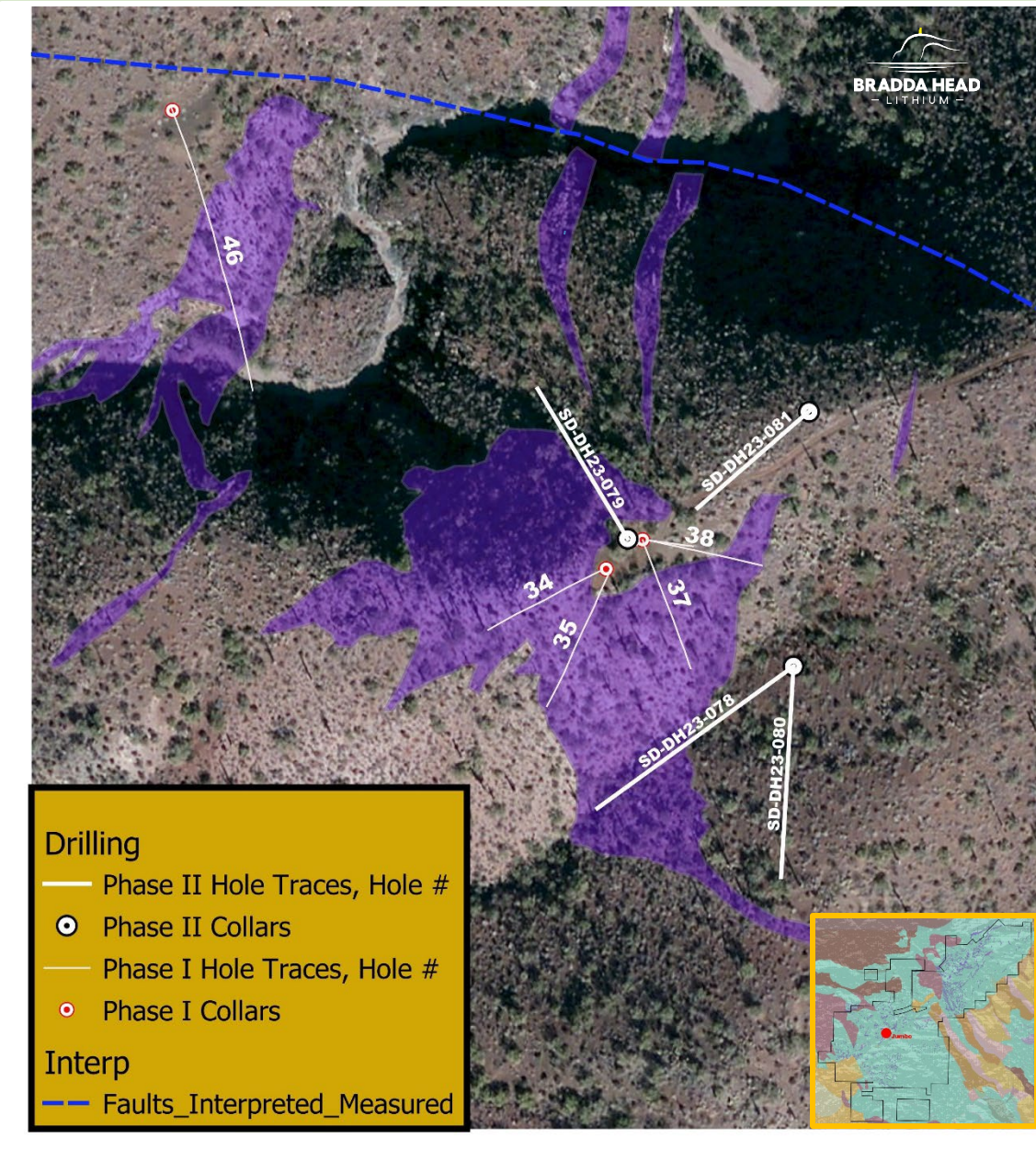


## Highlights:

- 5.27m @ 0.51% Li<sub>2</sub>O within 24.65m @ 0.24% Li<sub>2</sub>O in SD-DH23-057  
(See section below)
- 11.8m @ 0.32% Li<sub>2</sub>O followed by 5.87m @ 0.48% Li<sub>2</sub>O in SD-DH23-05  
(hole not shown in cross section)



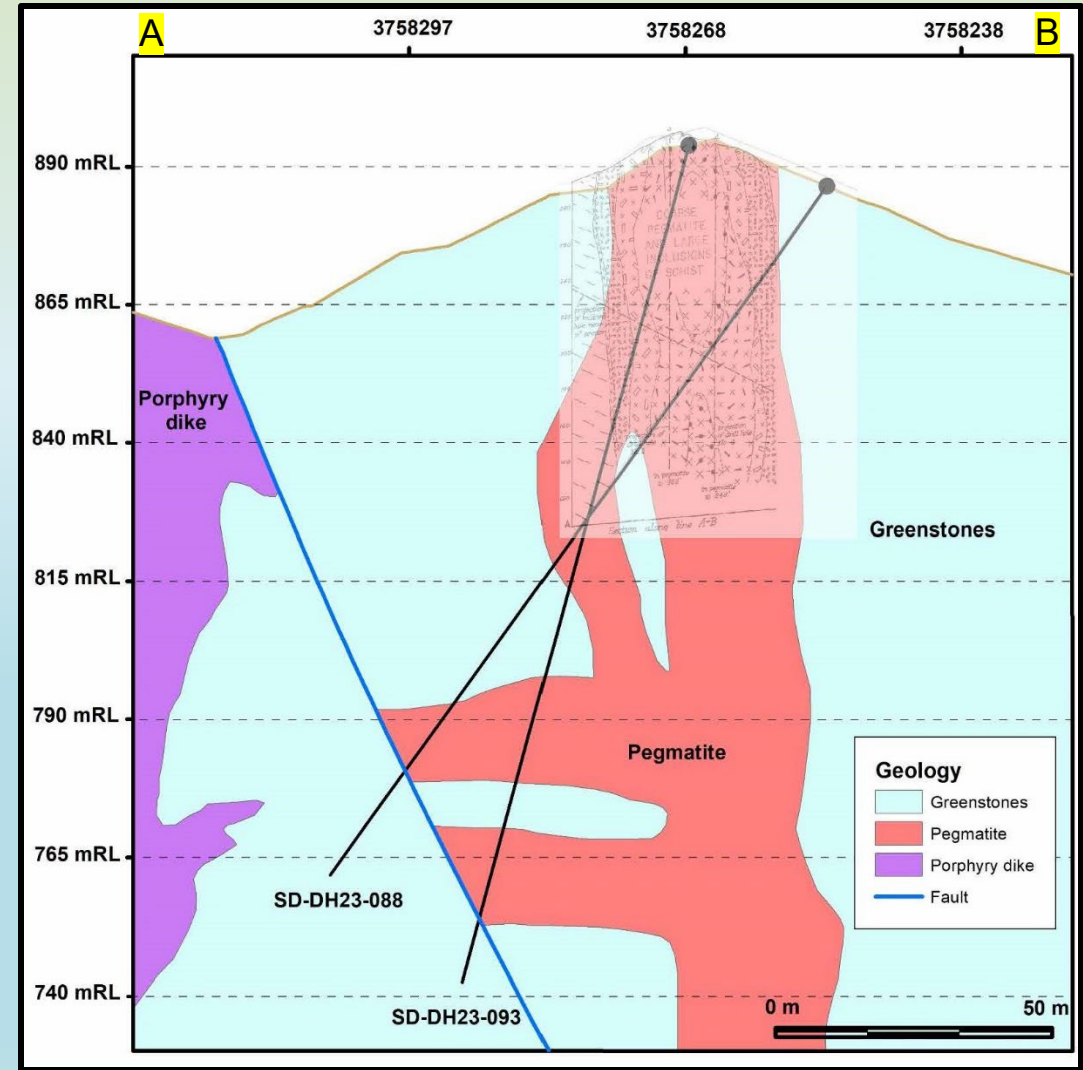
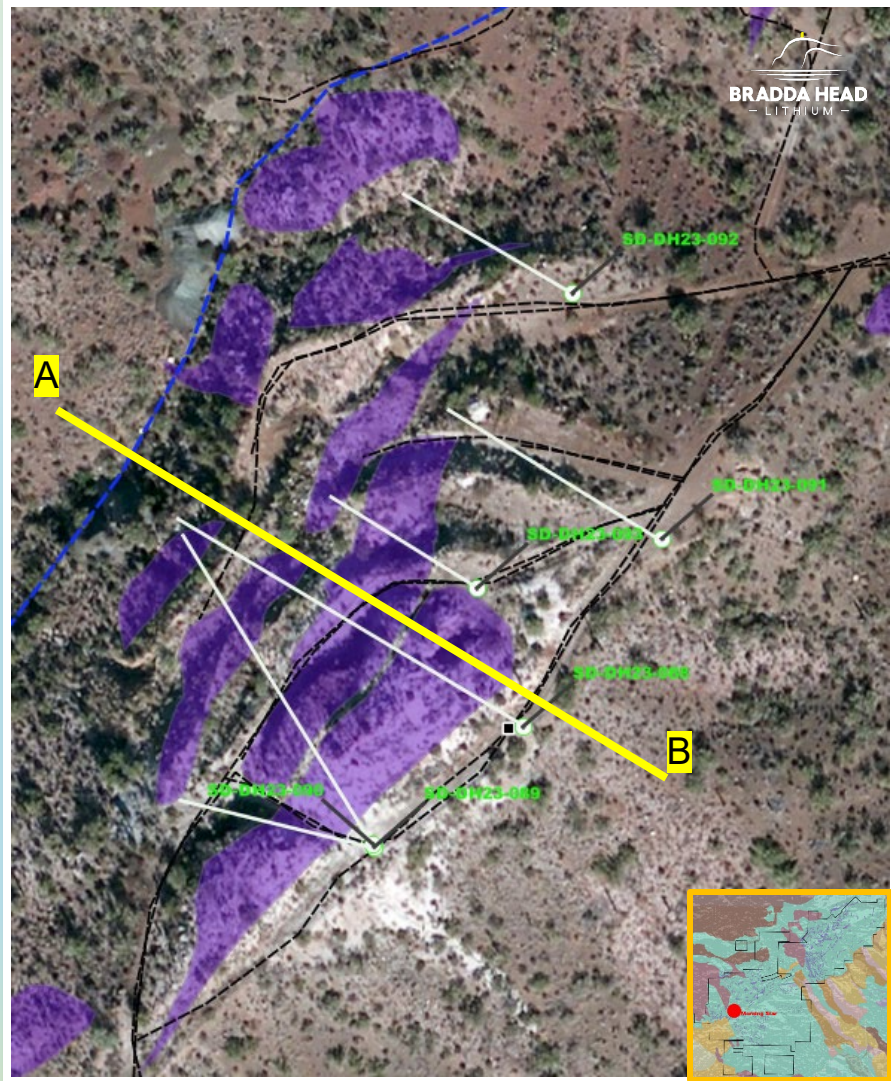
# Jumbo — Phase I Metallurgical Test Work



- Three composite samples submitted to SGS Laboratories in Lakefield, Canada
- All three composites collected from Jumbo drill holes, seen to left
- Low grade @ 0.34% Li<sub>2</sub>O<sub>m</sub> Medium grade @ 1.03% Li<sub>2</sub>O, and high grade at 3.05% Li<sub>2</sub>O samples
- Preliminary work on medium grade composite conducted to determine dense media separation properties
- Sample crushed to ¼" and underwent DMS (Dense media separation), resulting in concentration of 6.0% Li<sub>2</sub>O with 50.3% interpolated recovery
- Tailings rejection was considered efficient with rejection of 60.6% mass and only a loss of 2.1% lithium

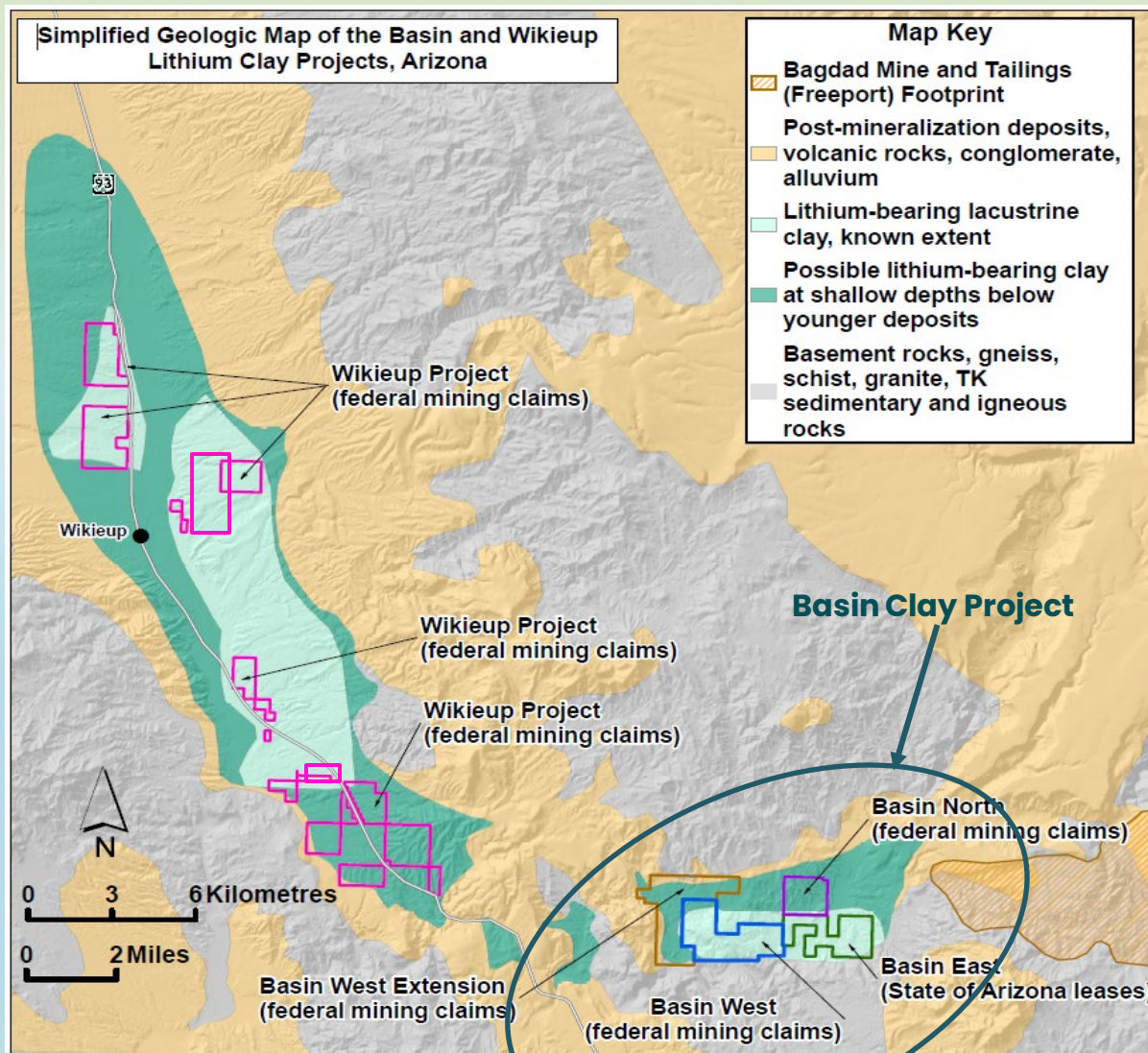
# Morning Star Target: Drilling In Progress, Spodumene-Pegmatites Encountered in all Holes

**Below:** Drill Hole pattern, Phase 2 program. All holes encountering spodumene, minor lepidolite and montebrasite. Assays pending for all holes



**Above:** Cross Section of Phase 2 Drill Holes, dominantly Li-bearing pegmatites. Shaded cross section from Jahns (1952) and denotes zoned pegmatite with Li minerals.

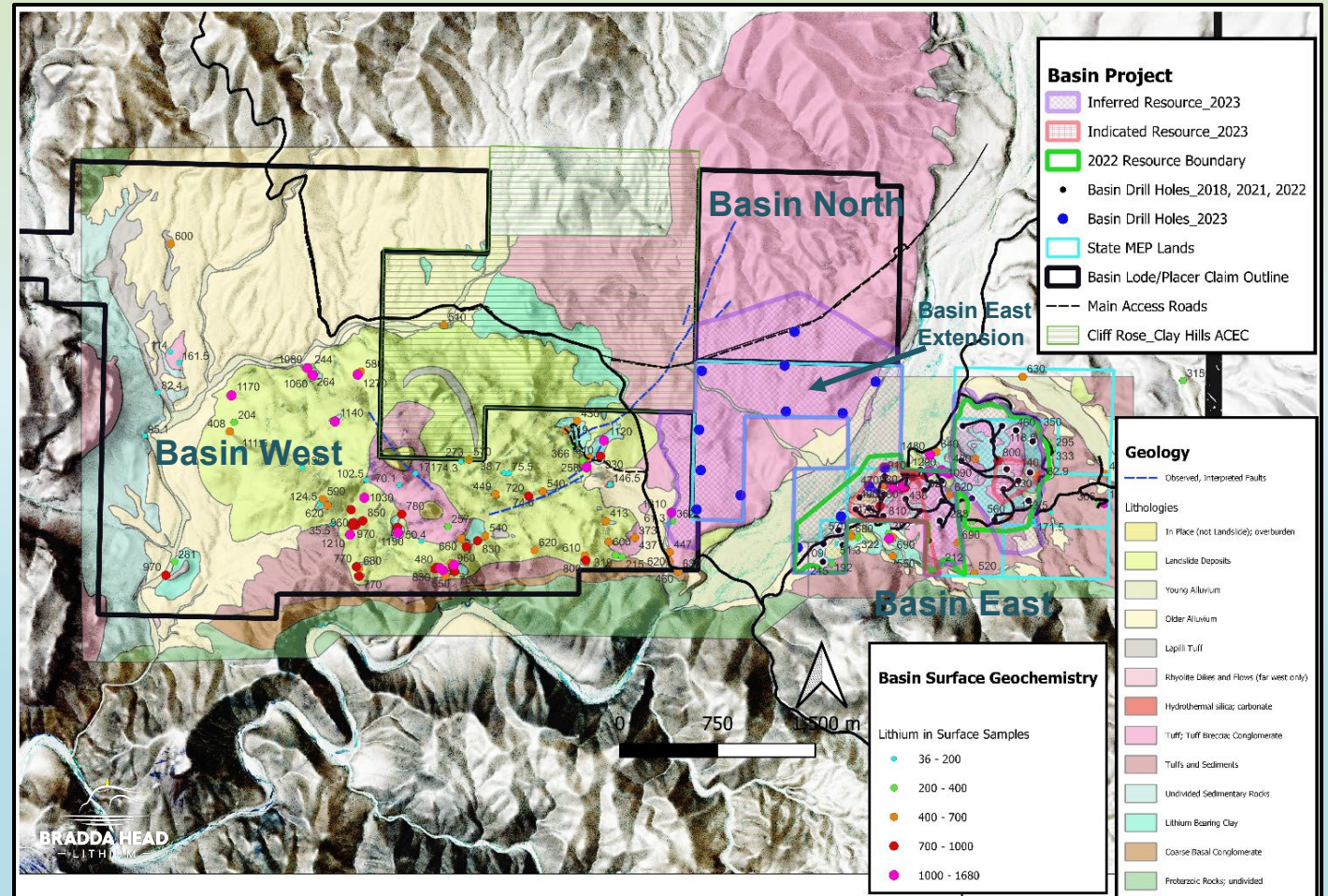
# Lithium in Clay Location: Basin



- Basin Clay Project, State and BLM lands, new resource of >1.0MT LCE, new 2.5MT LCE target achievable with Basin North drilling
- Extensive land package covering c.17km<sup>2</sup> , additional 2.8km<sup>2</sup> added to Basin North for a total of 19.7km<sup>2</sup>
- LRC Royalty payment of US \$2.5M received, additional \$3.0M in cross hairs
- Exploration plan of operation permit with BLM to expand drilling footprint in Basin West progressing well

### Basin: Tripled Resource, Further Expansion Opportunities

- 1** Resource of **1.085Mt** of LCE and an identified 11.0 to 4.0Mt LCE JORC Expl. Target
- 2** Drill programme finished at BEE/BN in Q3, **Tripled** inferred and indicated LCE resource
- 3** Continued step-out drilling to North will create opportunity for growth and possible expansion exceeding 2.5MT LCE and additional \$3.0M royalty payment.
- 4** Permitting continues at Basin West, Basin West Extension, which cover a c.11km<sup>2</sup> area
- 5** Metallurgical results demonstrate: extract >98% of lithium within 1 hour, cyclone classification clay upgrade possible grade by 26% to 1,900ppm Li



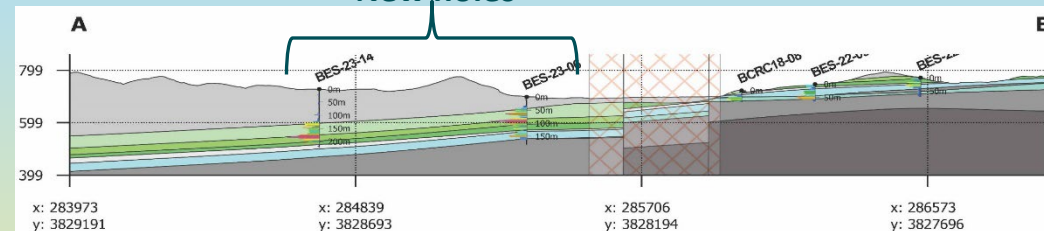
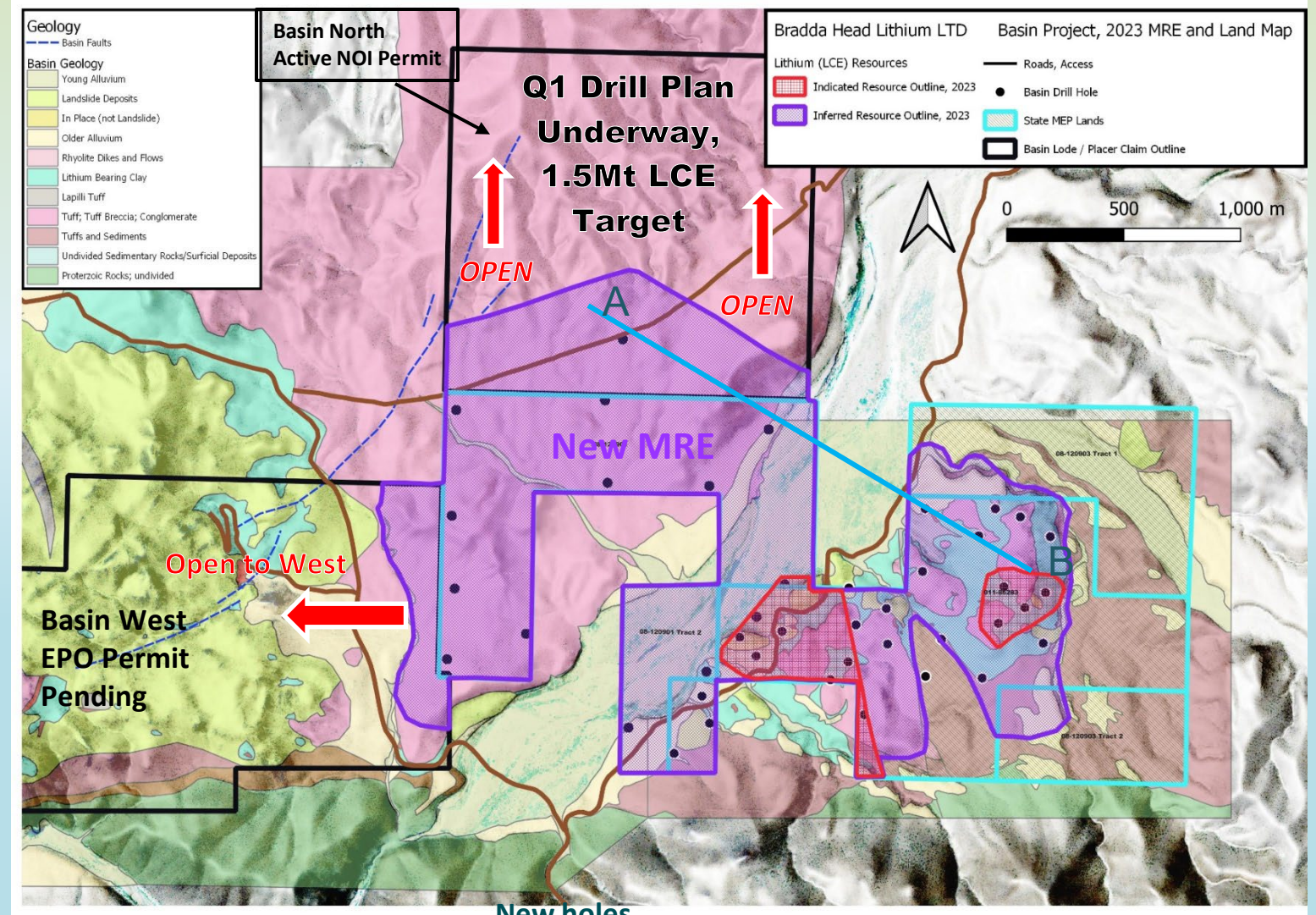
MRE Timeline	LCE (kt)	Resource area (km <sup>2</sup> )	% of Basin Project area	Drilled area (km <sup>2</sup> )
Q4 2022 MRE	371	1.2	7.2%	1.4
Q3 2023 MRE	1,085	3.3	14.0%	3.9

**Total**      **1.5 to 4.0Mt Target**      **17.2km<sup>2</sup> area**      **Huge potential for resource growth as cost of discovery at Basin is US\$11 per tonne of LCE discovered**

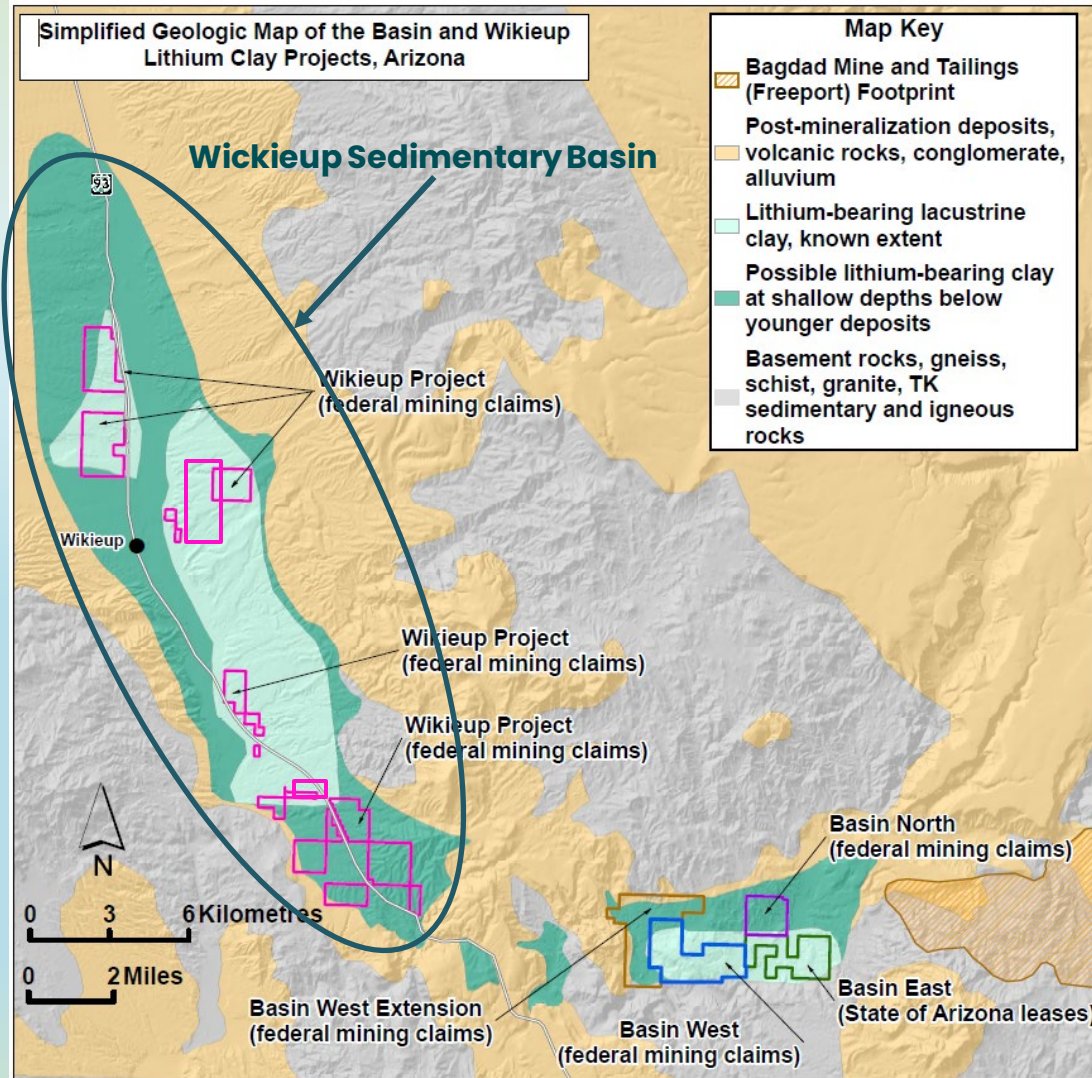
# Basin Project Resource Growth – 2023 Drilling Resulted in Milestone 1.085MT LCE

**Basin Project**  
 Significant Resource Expansion Confirmed

- Drill program completed in August, 2023. 2,355m / 14 sonic drill holes resulted in new resource calculation by SRK of **1.085 Mt LCE**
- Drilling confirmed upper clay thickens to the West and North – West of Basin East onto Basin East Extension and **Basin North**
- Upper clay horizon more than doubles in thickness from 34 to **80m**
- **Molybdenum** consistent and highly anomalous throughout upper clay high grade horizon, mineralogy investigation underway
- Basin North drill permit to be amended, **Q1 drill program envisaged**
- A >1.5MT LCE Target is envisaged at Basin North to reach **2.5MT LCE**



# Lithium in Clay Overview of Wickieup - Neighbor to Basin



- Sedimentary assets across Wickieup have shared geology, lacustrine environment with district-scale potential for Li
- Extensive land package covering c.24km<sup>2</sup> funded to pursue additional drilling as targets emerge from surface work
- LRC Royalty transaction applicable to the Wickieup Property, room to grow and capture second royalty payment
- 2024 targeting work to include surface mapping, geochemical sampling, tectonic modelling



# Lithium Brine Assets, Nevada

## Wilson



### Summary

- Location: Nevada, USA
- Project Area: 13.6 km<sup>2</sup>



### Overview

- Located in Nye County, Nevada, 81 miles east of Clayton Valley lithium brine project



### Exploration to date

- Surface sedimentary sampling and follow up studies
- Geophysical study conducted and shallow sampling auger drilling conducted the upper 100 – 300 m, deeper sub-horizontal conductor at 700–900m interpreted to represent brine saturated basin-fill with possible vertical feeder structures

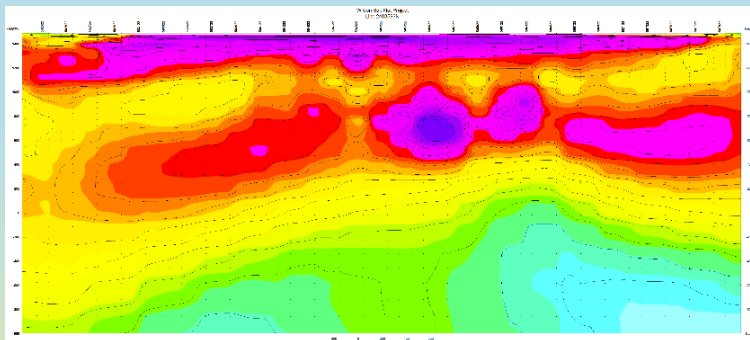


### Exploration plans

- Drilling programme planned for 2024 to test brine geochemistry and shallow clay horizon

## Wilson geophysics

MT Inversion Profile



## Eureka



### Summary

- Location: Nevada, USA
- Type: Brine
- Project Area: 11.8 km<sup>2</sup>



### Overview

- Located in Lander County, Nevada, 106 miles northeast of Clayton Valley



### Exploration to date

- A shallow RC drill program was completed to test and identify potential for clay mineralization near surface
- MT geophysics conducted Q4 2021, with positive results identifying conductors at 700–900m depth, 6km strike

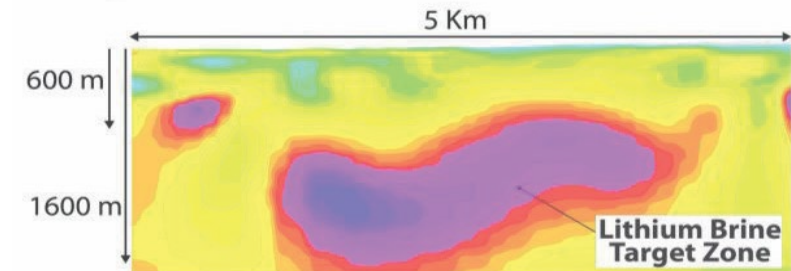


### Exploration plans

- A drill programme will be permitted for 2024 to test the brine geochemistry

## Eureka geophysics

Magnetotellurics Profile

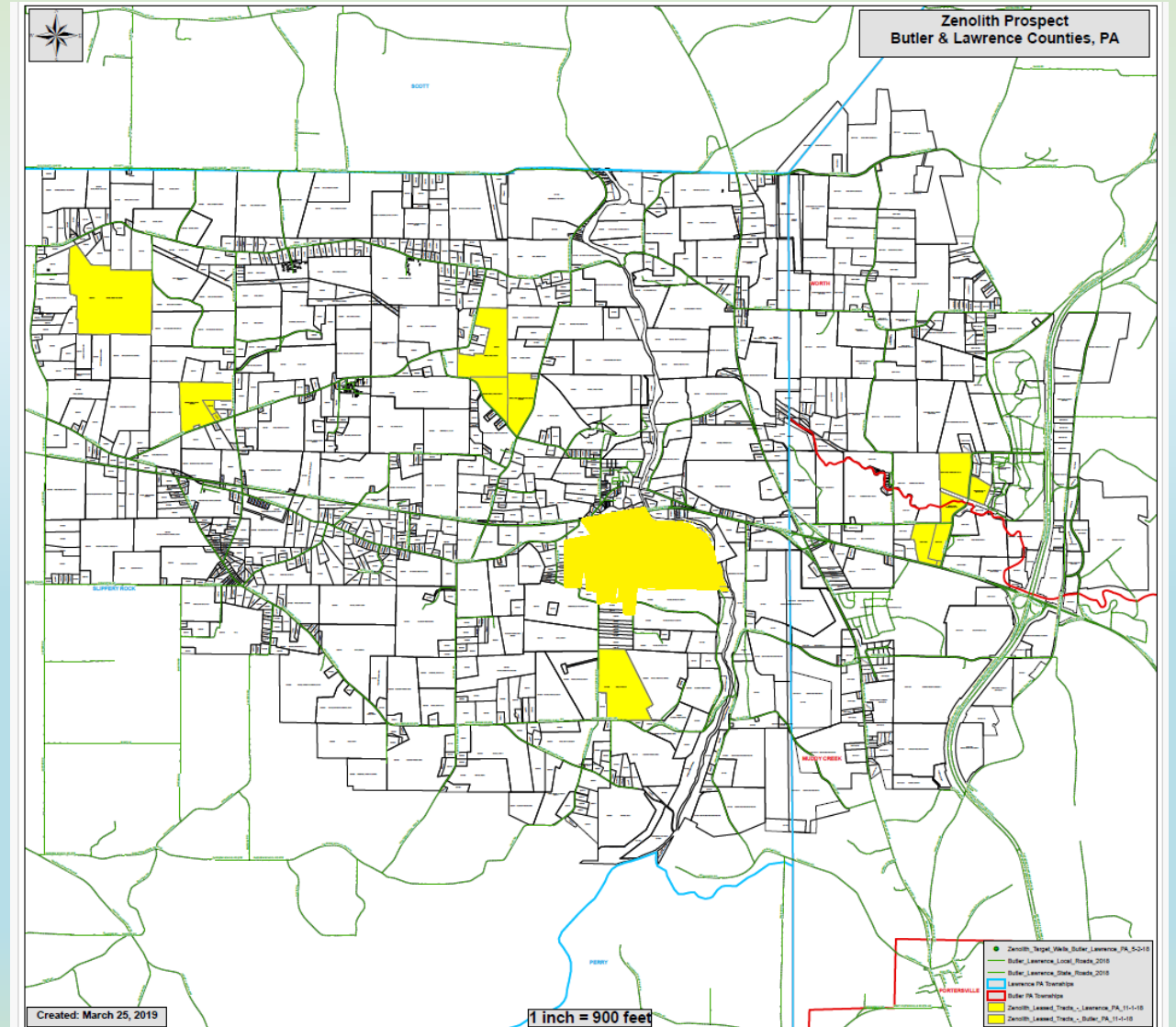


# Lithium Oil Brine Assets—Pennsylvania, USA

- Western Pennsylvania near Ohio state line and 55km north of Pittsburgh
- Oil Brine Reservoir in Oriskany Fm @ 1,600m
- 720 acres leased, consolidated over 5 targets
- Former Oil wells sampled 490 and 489 mg/l Lithium adjacent or very proximal to leased properties

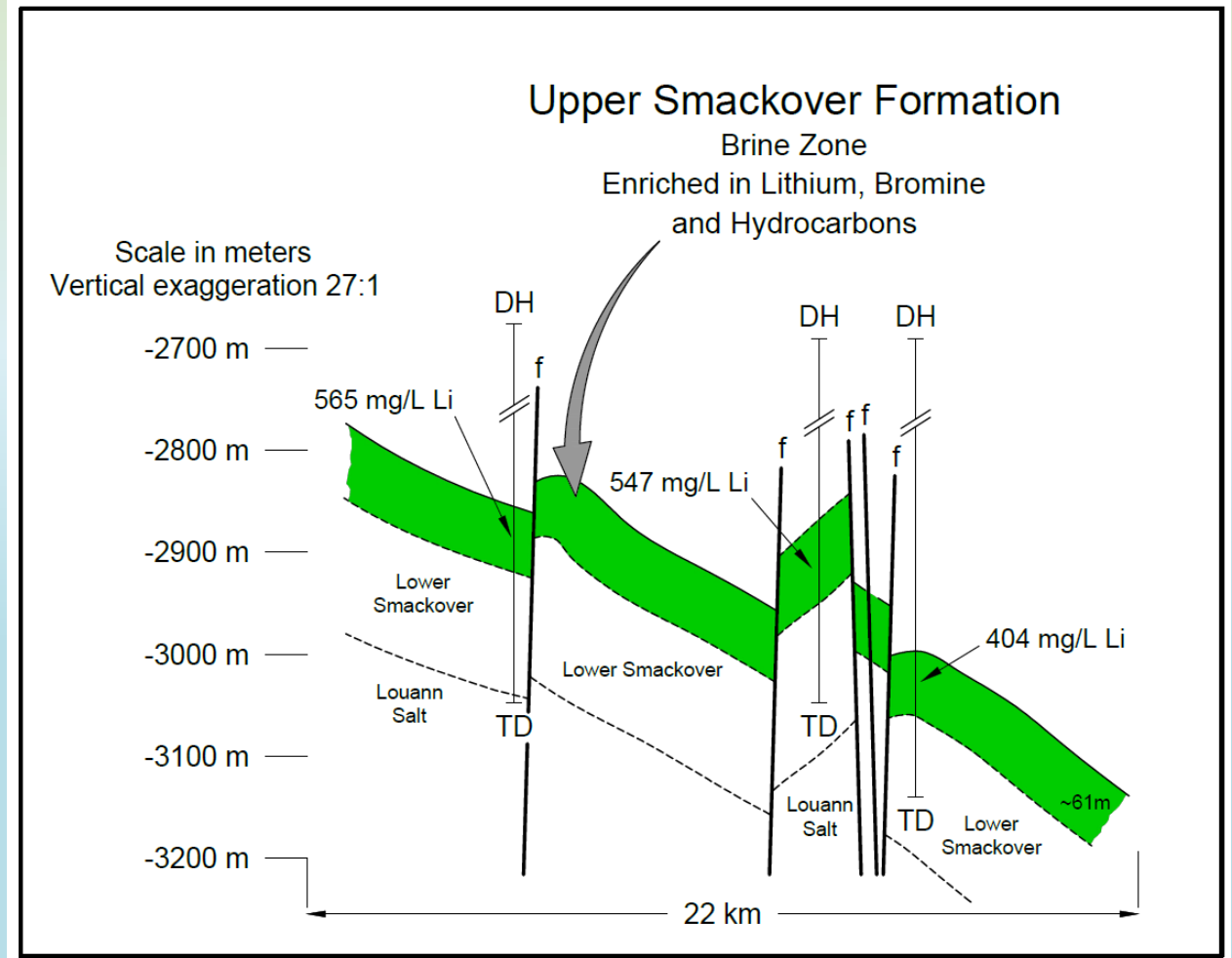
Table 5-20: Pennsylvania Project: Historical Brine Assays (Dresel & Rose)

Well	Li (mg/L)	Br (mg/L)	I (mg/L)	Ca (mg/L)	Na (mg/L)	Cl (mg/L)	S.G.
Well #1	490	1,880	64	24,720	49,000	133,800	1.151
Well #2	489	1,570	31	23,400	34,200	115,900	1.130



# Lithium Oil Brine Assets—Texas, USA

- Eastern Texas at Arkansas border
- 39 acres under lease for exploration, at center of cross section
- Lithium Oil Brine Reservoir hosted in Smackover Fm
- Well on lease measured **561 mg/litre** Li by USGS
- Numerous tracts of land targeted for lease, negotiations ongoing
- Standard Lithium properties 40km to east, Albemarle due north <5km



# Environmental, Social, and Governance

## Environment

**Enhanced and continuous environmental stewardship is our core attribute**

---

**Protect ground and surface water resources**

---

**Operate with respect for the land, sensitive environment, and cultural resources**

## Social

**Ensure social license to operate with our host communities and neighbours is obtained and maintained**

---

**Respect local culture and traditions**

---

**Partner with host communities to find ways to support programs that increase quality of life and educate**

## Governance

**Create a culture of respect and accountability for our management and workforce**

---

**Operate ethically, respectfully, and responsibly**

---

**Obtain all required permits, take proactive approach in permit requirements and front-load with cultural and environmental studies**

### 2023 ESG Initiatives

#### Water Conservation Initiatives

After extensive consultation with local stakeholders and tribes within Arizona, Bradda has identified the key issues facing the local communities, with water conservation being at the top

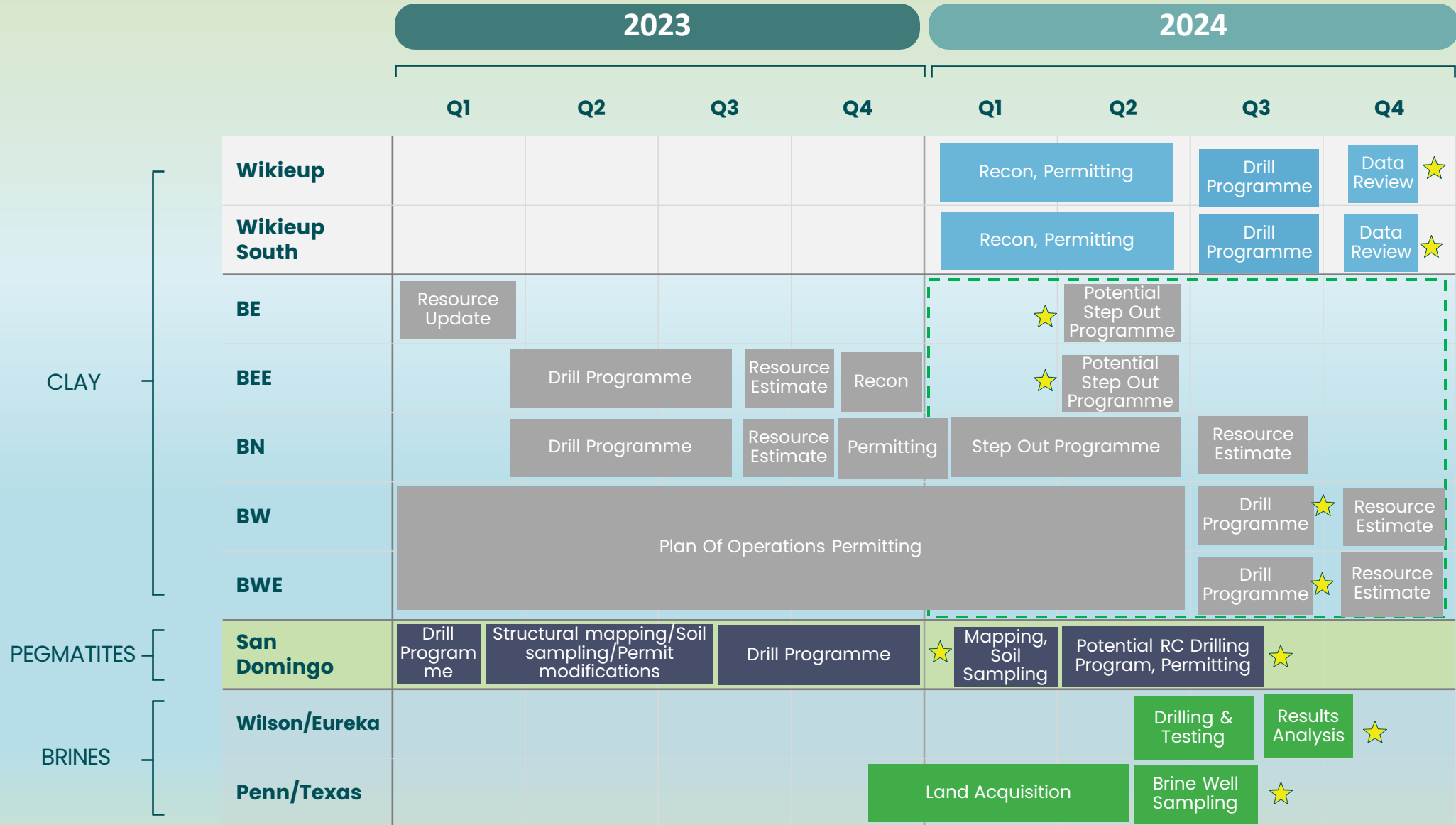
Bradda then commissioned Water Conservation Initiatives for the Basin and San Domingo projects, new drill site design initiatives to be addressed in future drilling campaigns and across our portfolio of assets

#### Community Website

In late 2022 Bradda released a Community focussed website to keep our local stakeholders updated on our activities and to give them a platform to give us feedback. The website will also be a platform for further initiatives

# Fast Track Approach for Growth

Exploration Timeline



Decision Point



Potential Early Stage Technical Study

## Low Carbon Footprint By Sourcing Lithium in the USA for the USA Battery Market



Aggressive, Phase 2 drilling campaign resumed at our San Domingo pegmatite asset in Arizona, with promising visual results



New Indicated and Inferred Resource of 1.085MT LCE at Basin within clays, triggers US\$2.5M payment to BHL by LRC. 2.5MT Target Possible – Potential to add US\$3.0M Royalty Payment



Experienced management with proven track-record of returning value to shareholders



Low carbon footprint lithium for the US domestic market. Strong ESG focus, with new water conservation initiatives focused on drill methods and drill site design



Supportive mining jurisdiction for Basin; the nearby Freeport Bagdad copper mine has been in operation since 1928 and currently proceeding with an expansion

AIM: BHL | TSXV: BHLI | OTCQB: BHLIF

# Thank you for your attention



# APPENDIX



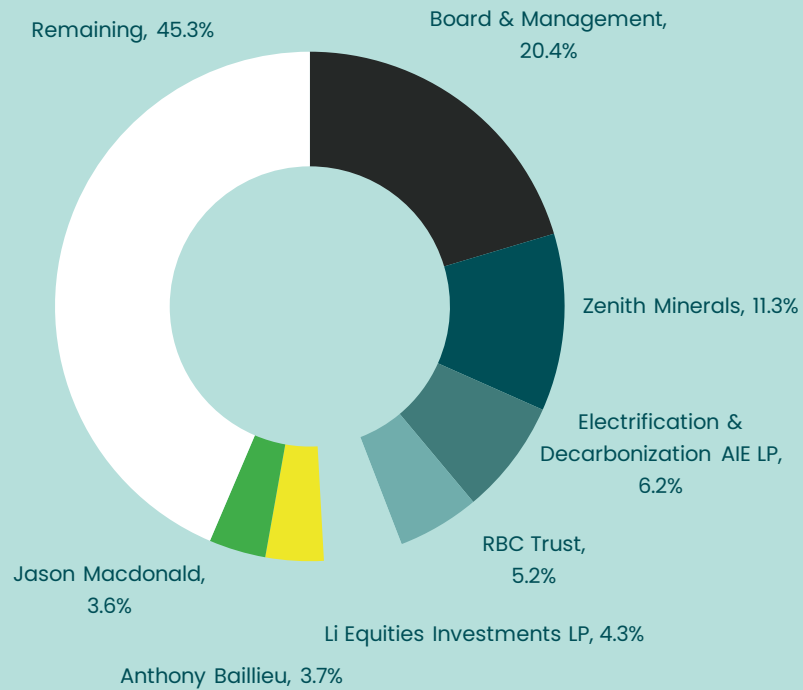


# Bradda Head – Capital Structure



## Capital Structure

**20%**  
held by the Board and Management



## Strong Cash Position

US\$3.5m cash as of end of October 2023

390,609,439 shares in issue<sup>(1)</sup>

Note: (1) Undiluted basis. On a FD basis, total is 510,474,735 as of 31 October 2023.

Investment Case for the USA

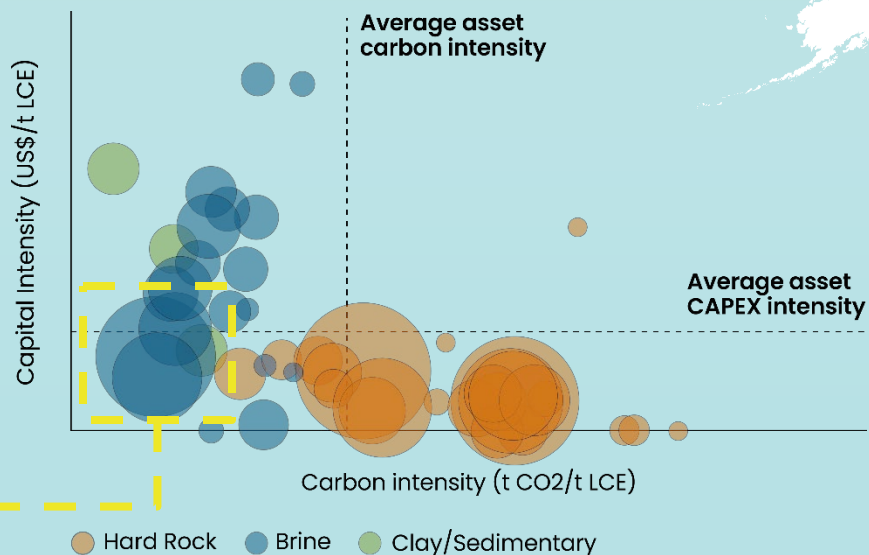


# Developing US Produced Low Carbon Footprint Lithium

\$152bn of ESG funds flowed into Low Carbon investments over 2021

C

Carbon intensity<sup>(1)</sup>

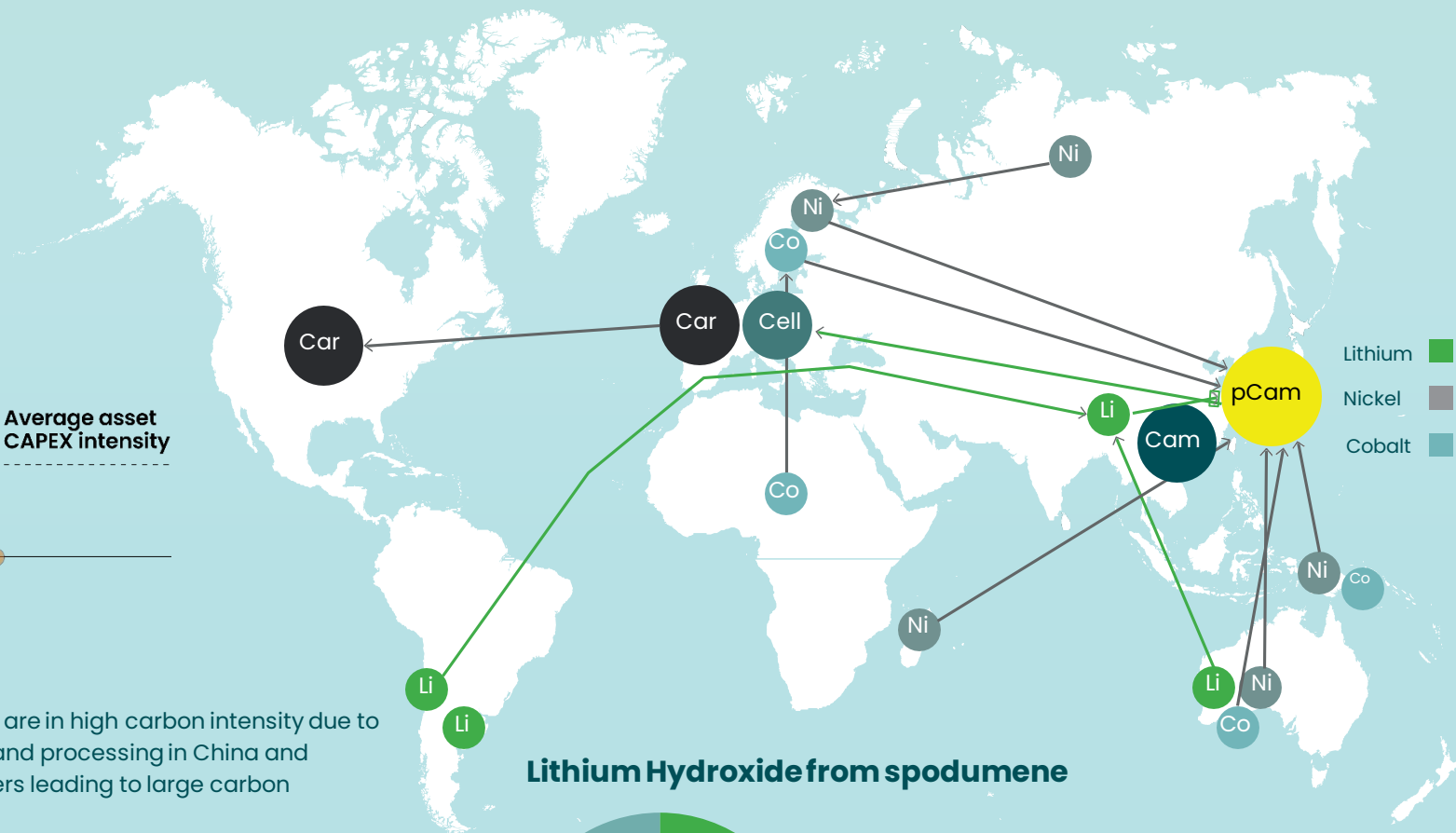


Bradda's assets would likely have a low Capital intensity and low carbon intensity<sup>(2)</sup> compared to the majority of future lithium projects<sup>(3)</sup> due to their favourable location

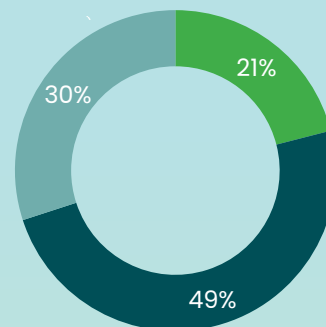
- Mineral/Pegmatites are in high carbon intensity due to mining in Australia and processing in China and shipping to end-users leading to large carbon footprint,
- Bradda's lithium production from pegmatite ore would have a low carbon footprint for US consumers and potentially be able to reduce Scope 2 and 3 emissions compared to existing operations in Australia

Source: Wood Mackenzie (Roskill), Benchmark Mineral Intelligence.

Note: (1) Bubble size represents future production in LCE 2025-2030. Emissions intensity is the CO<sub>2</sub> emissions (from all sources) required to produce one tonne of refined lithium product. (2) For US consumers. (3) Assuming current processing routes and infrastructure



## Lithium Hydroxide from spodumene



- Scope 1**  
Heat production
- Scope 2**  
Australian and Chinese electricity, the latter causing the biggest effect (main energy source: coal)
- Scope 3**  
Sodium hydroxide, natural gas, calcium carbonate, lithium product lorry transportation (Australian plus Chinese)

# Strategic Positioning in the USA for Lithium End-Users

## USA Lithium Projects

- In April 2021, the Biden administration released a \$1.9 trillion infrastructure plan
- Under the Biden administration, clean energy production will be ramped up, with lithium considered to be a key resource. \$174 billion has been earmarked to “win the EV market” by spurring domestic supply chains and giving consumers rebates to buy them.
- Favourable location with respect to power, rail and road transport
- Electricity and gas infrastructure easily accessible and in place
- Multiple lithium end users located in Western states, most notably the Tesla Gigafactory
- Assets in mining friendly states, nearby Nevada lithium mines/assets:

- 1** Silver Peak, Albemarle (Mkt Cap US\$25.7bn), brine
- 2** Rhyolite Ridge, Ioneer (Mkt Cap US\$1.1bn), sedimentary
- 3** TLC, American Lithium (Mkt Cap US\$588m), sedimentary
- 4** Clayton Valley, Cypress (Mkt Cap US\$231m), sedimentary
- 5** Clayton North, Jindalee (Mkt Cap US\$203m), sedimentary



## Bradda Head LTD Assets

- Brine assets
- Sedimentary assets
- Pegmatite asset

Technical	NOMAD	Brokers	Legal	Audit	Investor Relations
		<b>Shard Capital Partners LLP</b> Isabella Pierre +44 (0) 207 186 9927	<b>Hill Dickinson LLP</b>		
		<b>Panmure Gordon Ltd</b> John Prior Hugh Rich +44 (0) 207 886 2500	<b>Fasken</b>		
<b>SRK Consulting (UK) Ltd</b> Martin Pittuck +44 (0) 292 034 850	<b>Beaumont Cornish Ltd</b> James Biddle +44 (0) 207 628 3396		<b>Fennemore Law</b>	<b>PKF Littlejohn</b>	<b>Tavistock</b> Nick Elwes +44 (0) 207 920 3150
		<b>Red Cloud (North American Broker)</b> Joe Fars +1 (416) 803 3562			

<b>BLM</b>	Bureau of Land Management	<b>Li<sub>2</sub>O</b>	Lithium oxide	<b>Mt</b>	Metric Tonnes
<b>Ha</b>	Hectares	<b>m</b>	Metres	<b>NURE</b>	National Uranium Resource Assessment
<b>K</b>	Potassium	<b>Mg/l</b>	Milligram per litre	<b>PFS</b>	Pre-feasibility study
<b>kT</b>	Thousand tonnes	<b>MRE</b>	Mineral Resource Estimate	<b>ppb</b>	Parts per billion
<b>LCE</b>	Lithium carbonate equivalent	<b>MT</b>	Magnetotelluric	<b>ppm</b>	Parts per million
<b>Li</b>	Lithium				

## CONVERSION FACTORS

<b>LCE → Li</b>	→	<b>Li → LCE</b>	→	<b>Li → Li<sub>2</sub>O</b>	→	<b>Li<sub>2</sub>O → LCE</b>
<b>0.188</b>		<b>5.323</b>		<b>2.15</b>		<b>2.473</b>