

AIM:BHL | OTCQB:BHLIF

BRADDA HEAD LITHIUM: AGGRESSIVELY MOVING FORWARD IN THE US LITHIUM SPACE

December, 2025



The information contained in this document has been prepared by Bradda Head Lithium Limited (“Bradda Head” or the “Company”). It has not been independently verified and is subject to updating, revision and further amendment. This document has not been approved for the purposes of Section 21 of the FSMA and therefore this document is being delivered for information purposes only. This document does not and is not intended to constitute, and should not be construed as, an offer, inducement, invitation or commitment to purchase, subscribe to, provide or sell any securities, services or products of the Company in any jurisdiction or to provide any recommendations for financial, securities, investment or other advice or to take any decision.

The information in this document has not been fully verified and is subject to material updating, completion, revision, verification and further amendment. This document contains draft technical information, which includes certain internal estimates made by the Company.

Beaumont Cornish Limited (“Beaumont Cornish”), which is authorised and regulated in the United Kingdom by the Financial Conduct Authority (“FCA”) is acting on behalf of the Company and no other person (whether or not a recipient of this document) and will not be responsible to any person other than the Company for providing the regulatory and legal protections afforded to customers (as defined by the FCA Handbook and Guidance), nor for providing advice in relation to the contents of this document. Beaumont Cornish has not independently verified any of the information within this document. Beaumont Cornish shall not be liable for any direct or indirect damages, including lost profits arising in any way from the information contained in this document.

This document contains certain forward looking statements that involve risks and uncertainties. All statements other than statements of historical facts contained in this document, including statements regarding the Company’s future financial position, business strategy and plans, business model and approach and objectives of management for future operations, are forward-looking statements. Generally, the forward-looking statements in this document use words like “anticipate”, “believe”, “could”, “estimate”, “expect”, “future”, “intend”, “may”, “opportunity”, “plan”, “potential”, “project”, “seek”, “will” and similar terms.

By their nature, forward-looking statements are subject to numerous risks and uncertainties, some of which are beyond Bradda Head’s control, including [the impact of COVID-19, general economic conditions, industry conditions, volatility of commodity prices, currency fluctuations, imprecision of resource estimates, environmental risks, changes in environmental, tax and royalty legislation, competition from other industry participants, the lack of availability of qualified personnel or management, stock market volatility, and ability to access sufficient capital from internal and external sources and those risk risk factors identity if the Company’s publicly filed disclosure documents available at www.sedar.com.

The Company’s actual results could differ materially from those anticipated in the forward looking statements as a result of many factors. The forward looking statements in these slides and this presentation are based on the beliefs and assumptions of the Company’s directors and information only as of the date of this document, and the forward looking events discussed in this document might not occur. Therefore, investors should not place any reliance on any forward looking statements. The Company undertakes no obligation to publicly update any forward looking statements, whether as a result of new information, future earnings, or otherwise. To the extent any forward-looking statements in this document constitutes “future-oriented financial information” or “financial outlooks” within the meaning of applicable Canadian securities laws (collectively, “FOFI”), such information is being provided to demonstrate the Company’s internal projections an the reader is cautioned that this information may not be appropriate for any other purpose and the reader should not place undue reliance on such FOFI.

Furthermore, this document includes information relating to past performance. Past performance is not an indication of future results.

While the information contained herein has been prepared in good faith, neither Bradda Head or any of their respective subsidiaries, shareholders, directors, officers, agents, employees or advisers give, have given or have authority to give, any representations or warranties (express or implied) as to, or in relation to, the accuracy, reliability or completeness of the information in this document, or any revision thereof, or of any other written or oral information made or to be made available to any interested party or its advisers (all such information being referred to as “Information”) and liability therefore is expressly disclaimed. Accordingly, neither Bradda Head or any of their respective shareholders, directors, officers, agents, employees or advisers take any responsibility for, or will accept any liability whether direct or indirect, express or implied, contractual, tortious, statutory or otherwise, in respect of, the accuracy or completeness of the Information or for any of the opinions contained herein or for any errors, omissions or misstatements or for any loss, howsoever arising, from the use of this document. Neither the issue of this document nor any part of its contents is to be taken as any form of commitment on the part of Bradda Head to proceed with any transaction and the right is reserved to terminate any discussions or negotiations with any prospective investors. In no circumstances will Bradda Head be responsible for any costs, losses or expenses incurred in connection with any appraisal or investigation of the Information. In furnishing this document, Bradda Head does not undertake or agree to any obligation to provide the recipient with access to any additional information or to update this document or to correct any inaccuracies in, or omissions from, this document which may become apparent. This document should not be considered as the giving of investment advice Bradda Head or any of their respective shareholders, directors, officers, agents, employees or advisers. Each party to whom this document is made available must make its own independent assessment of the Information after making such investigations and taking such advice as may be deemed necessary. In particular, any estimates or projections or opinions contained herein necessarily involve significant elements of subjective judgment, analysis and assumptions and each recipient should satisfy itself in relation to such matters.

Certain information contained in this document includes market and industry data that has been obtained form or is based on estimates derived from third party sources, including industry publications, reports and websites. Third party sources may state that the information contained therein has been obtained from sources believed to be reliable, but there is no assurance or guarantee as to the accuracy or completeness of included data. Although the data is believed to be reliable, neither the Company nor its agents have independently verify the accuracy, reliability or completeness of any of the information from third party sources referred to in the document or ascertained from the underlying economic assumptions relied upon by such sources. The Company and its agents hereby disclaim any responsibility or liability whatsoever in respect of any third-party sources or market and industry data or information.

Neither this document nor any copy of it may be (a) taken or transmitted into Australia, , Japan, South Africa or the United States of America, their territories or possessions; (b) distributed to any U.S. person (as defined in Regulation S under the United States Securities Act of 1933 (as amended)) or (c) distributed to any individual outside Australia or Japan who is a resident thereof in any such case for the purpose of offer for sale or solicitation or invitation to buy or subscribe any securities or in the context where its distribution may be construed as such offer, solicitation or invitation, in any such case except in compliance with any applicable exemption. The distribution of this document in or to persons subject to other jurisdictions may be restricted by law and persons into whose possession this document comes should inform themselves about. The reader understands and acknowledges that no prospectus has been prepared or filed with any securities commission or similar regulatory authority in Canada, and that no securities commission or similar regulatory authority in Canada has made any finding or determination as to the merit for investment in, or made any recommendation or endorsement with respect to, the Company.

The information contained in this presentation has been obtained by Bradda Head from its own records and from other sources deemed reliable, however no representation or warranty is made as to its accuracy or completeness. The technical information related to Bradda Head’s material properties disclosed herein is based upon technical reports prepared and filed pursuant to National Instrument 43-101 – Standards of Disclosure for Mineral Projects (“NI 43-101”) and other publicly available information regarding the Company, including the TECHNICAL REPORT AND MINERAL RESOURCE ESTIMATE UPDATE FOR THE BASIN LITHIUM, ARIZONA, USA, prepared by Damir Cukor P.Geo. And Brent Hilscher, P.Eng., August 12, 2024 and INDEPENDENT TECHNICAL REPORT ON THE SAN DOMINGO LITHIUM PROJECT, ARIZONA, USA, 18 October 2022, Martin Pittuck CEng, FGS, MIMMM. Scientific and technical information contained in this presentation related to the mineral resource estimates have been approved and verified by Martin Pittuck who is a “Qualified Person” in accordance with NI 43-101. The Qualified Person referred to above are independent of Bradda Head.

Introduction to Bradda Head

Reduced Geological Risk

Diversified lithium portfolio containing all three types of lithium assets: pegmatites, clays and brines (oil and solar)

Tier One Political Location

Nevada and Arizona are low risk jurisdictions – **ranked #2 and #7 Globally** by the Fraser Institute Survey of Mining Companies 2024, **no risk of asset nationalization**

US Gov Support

The Trump Administration and by Executive Order, announced expediting permits / approvals, reiterates support for critical minerals, including lithium, and emphasized financial support for domestic mineral projects as part of the Order

Uniquely Leveraged

Significant movement in lithium-brine space from majors Exxon, Equinor and Rio Tinto, firmly tipping the scale for Bradda's four brine assets

Focused on production

Striving to accelerate path to production through innovative initiatives including an AI-powered mineral sorting study at San Domingo, avenues to reduce Opex and Capex costs

Board & Management Committed

20% of shares held by Board and Management, **no debt**, belief in business model, committed to discovery, and poised to capture US lithium market

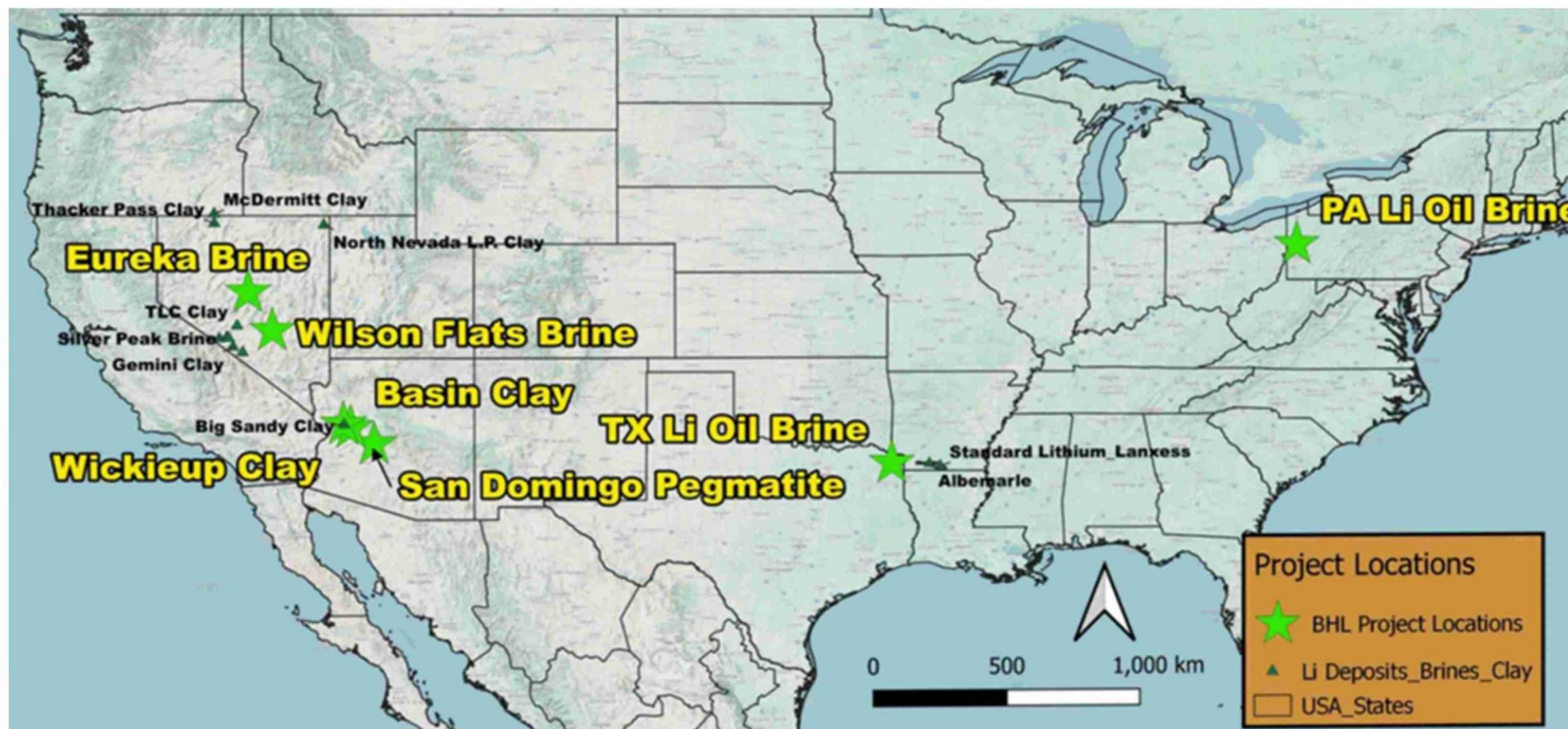
Right Time, Right Place, Right People

With significant supply deficits forecasted, Bradda and its experienced team, strongly supported by the Board, are poised to capture the rapidly evolving U.S. market

Developing US Lithium for US markets: BHL Assets

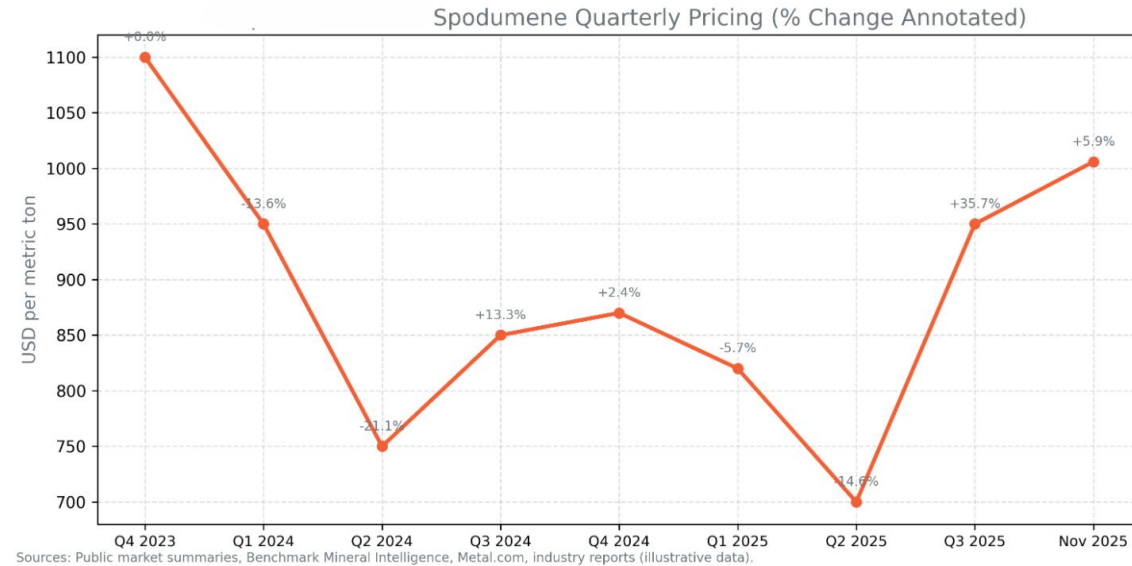
- San Domingo **Pegmatite**, AZ
- Basin & Wickieup **Clay**, AZ
- Wilson & Eureka **Brine**, NV
- Pennsylvania and Texas Lithium **Oil-Field Brines**

Seven projects, four states

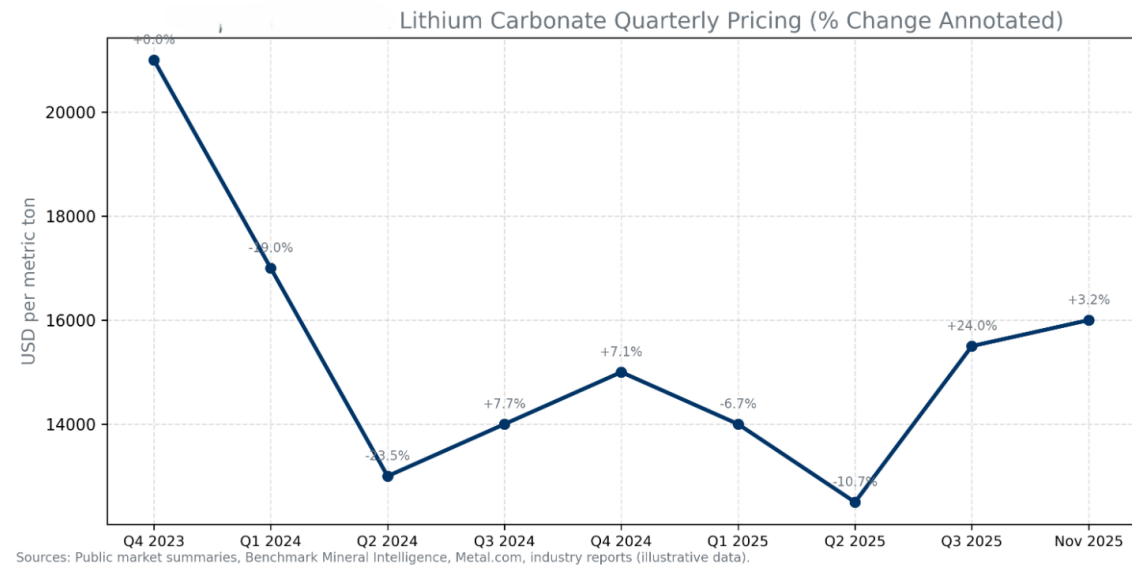


Lithium prices (USD per metric ton)

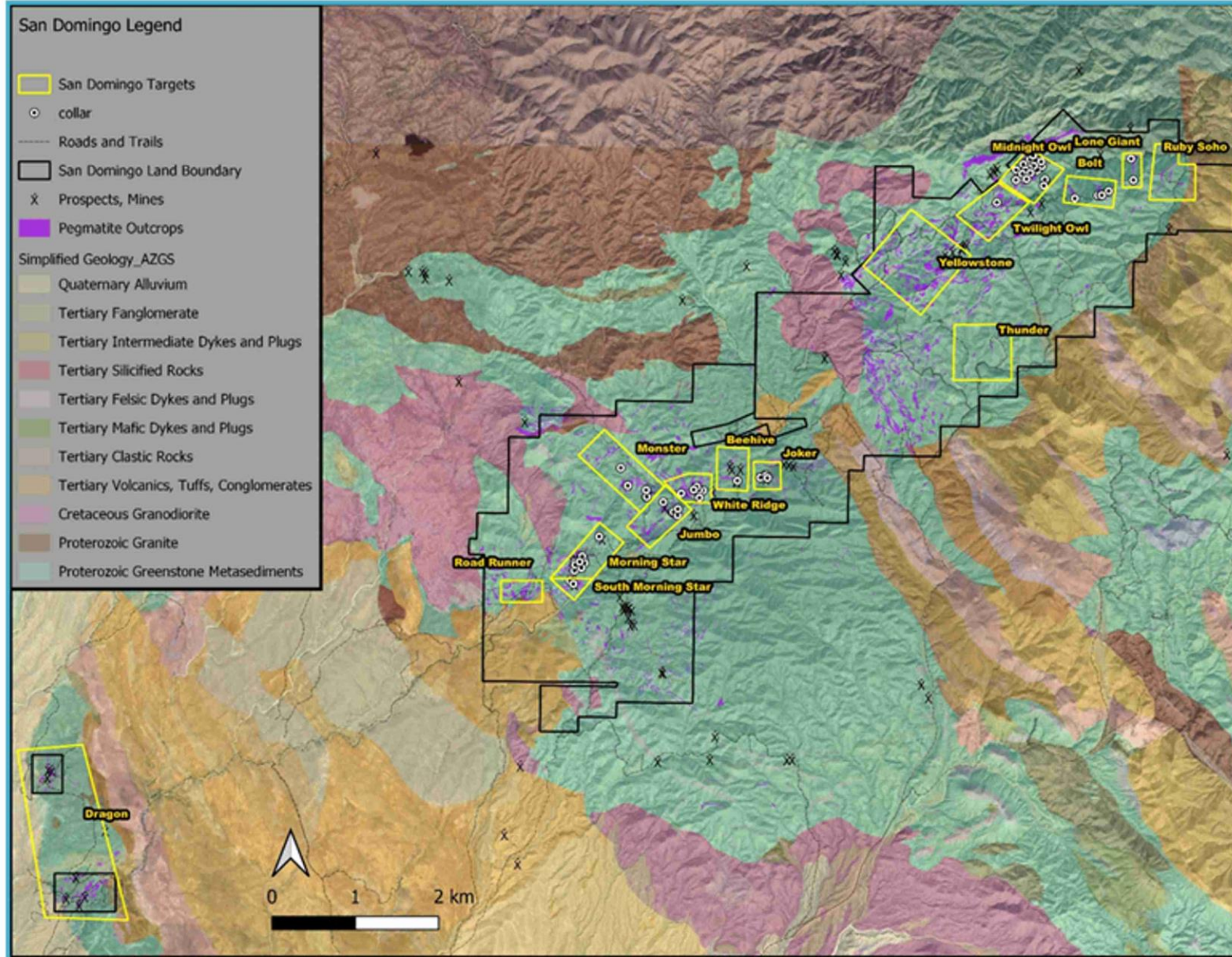
Spodumene (6% LiO₂)



Battery - grade Lithium Carbonate (Li₂CO₃)



San Domingo Pegmatites – Developing a World Class Lithium District in Arizona



- Tier 1 Jurisdiction in Arizona
- 100% Bradda Head Lithium Property, no royalties except to State
- 16 targets, five untested by drilling
- Dragon target is high priority, excellent surface geochemistry and large spodumene, only 3km from sand and gravel operation

San Domingo Pegmatites – recent drilling activity highlights prospectivity

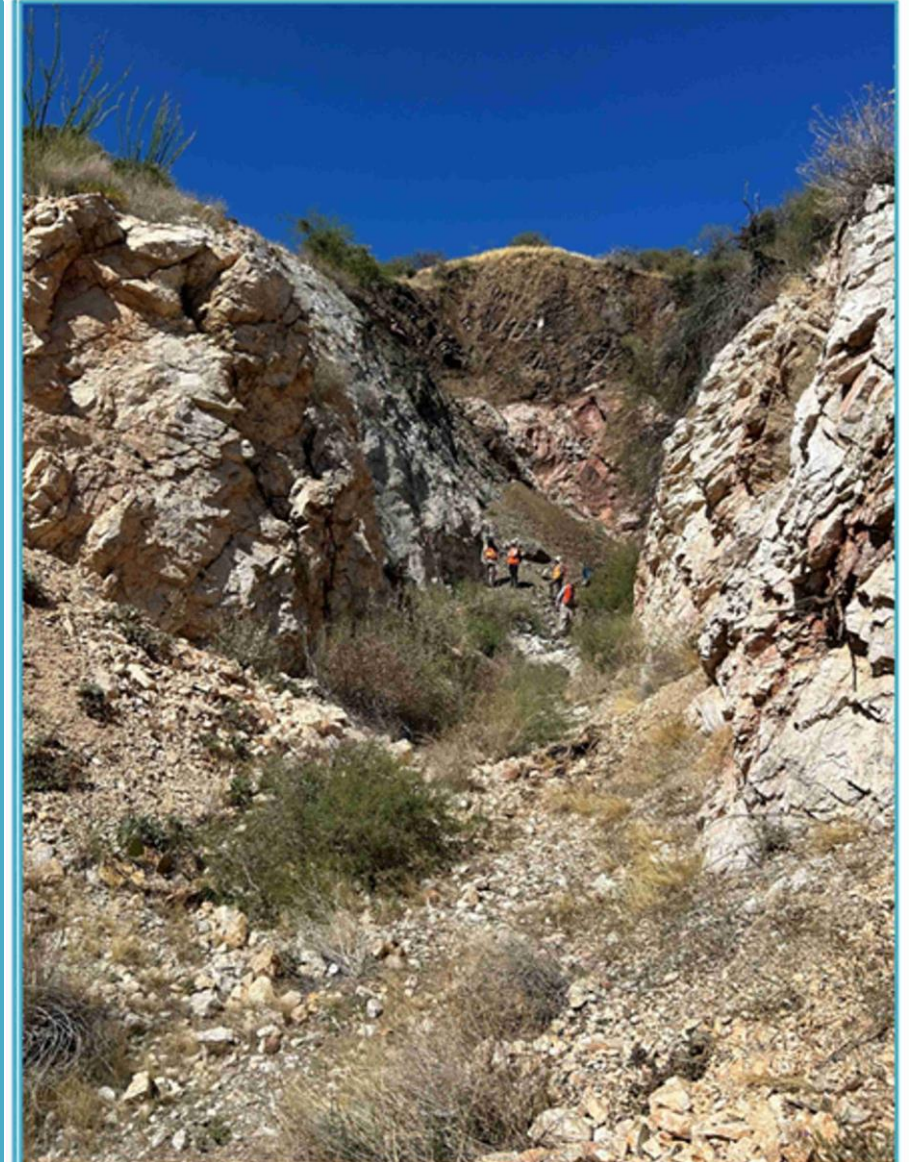
- **20.7km²** land position, 8 historic lithium mines 16 Target Areas
- **107 holes, 13,092 meters** drilled with core, 11 targets tested, highlights include:
- **31.85m @ 1.60% Li₂O and 362 ppm Cs** from 26.82m depth in hole SD-DH22-024 at **Midnight Owl**, including **20.02m at 1.97% Li₂O with 487 ppm Cs** from a shallow depth of 38.65m
- At the **Jumbo target**, drill hole SD-DH23-037 cut 9.54m @ 1.85% Li₂O with 235 ppm Cs from 46.24m depth
- **Morning Star** hole SD-DH23-093 with **8.99m @ 1.20% Li₂O** from 31.39m and hole SD-DH23-104 with **4.14m @ 2.07% Li₂O**
- Channel Sampling at **White Ridge**: 5.0m @ 2.33% Li₂O, 119 ppm Cs and 8.40m @ 1.17% Li₂O, 623ppm Cs at **Midnight Owl**
- **Channel Sampling at Dragon** include 8.8m @ 0.97% Li₂O with 174 ppm Cs and 10.4m @ 0.68% Li₂O with 341 ppm Cs



Above: Large spodumene crystals, White Ridge Target

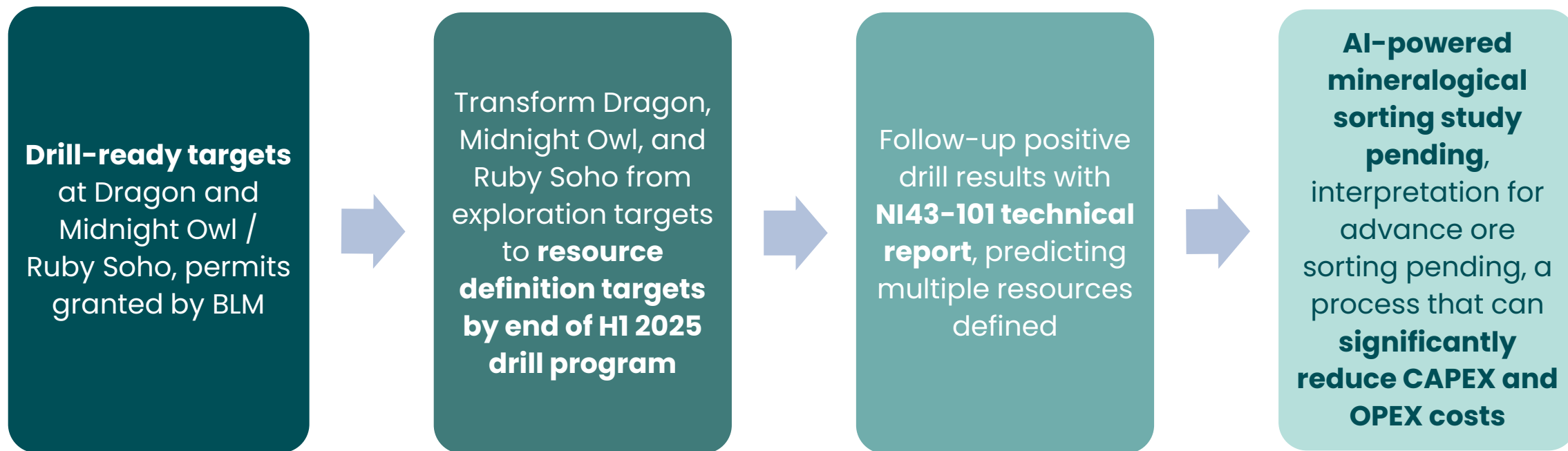
San Domingo Pegmatites – Developing a World Class Lithium District in Arizona

- Metallurgical tests on drill core composites from Jumbo indicate up to **6.0% Li_2O** concentrate with ¼" crush by HLS
- Positive results and potential cost savings of 10–15% by pre-DMS **mineral sorting** of high-grade spodumene composite using AI technology
- **Cesium** strongly anomalous in drill holes, up to 0.63% and 0.10% on the surface at Dragon; DOE & DOW opportunities for grants and funding
- **Drill permits approved:** Dragon, Midnight Owl, and Ruby
- 3,000-meter program designed, using reverse circulation equipment, to test shallow targets at Dragon, Midnight Owl, and Ruby Soho
- Pending results, inferred resource calculations anticipated at Midnight Owl, Jumbo, Ruby Soho, and Dragon, 43–101 compliant, end of 2026
- **Reviewing fast-track permitting to small-scale quarry type production**



Above: Midnight Owl Prospect, Mined in the 1940's for Spodumene

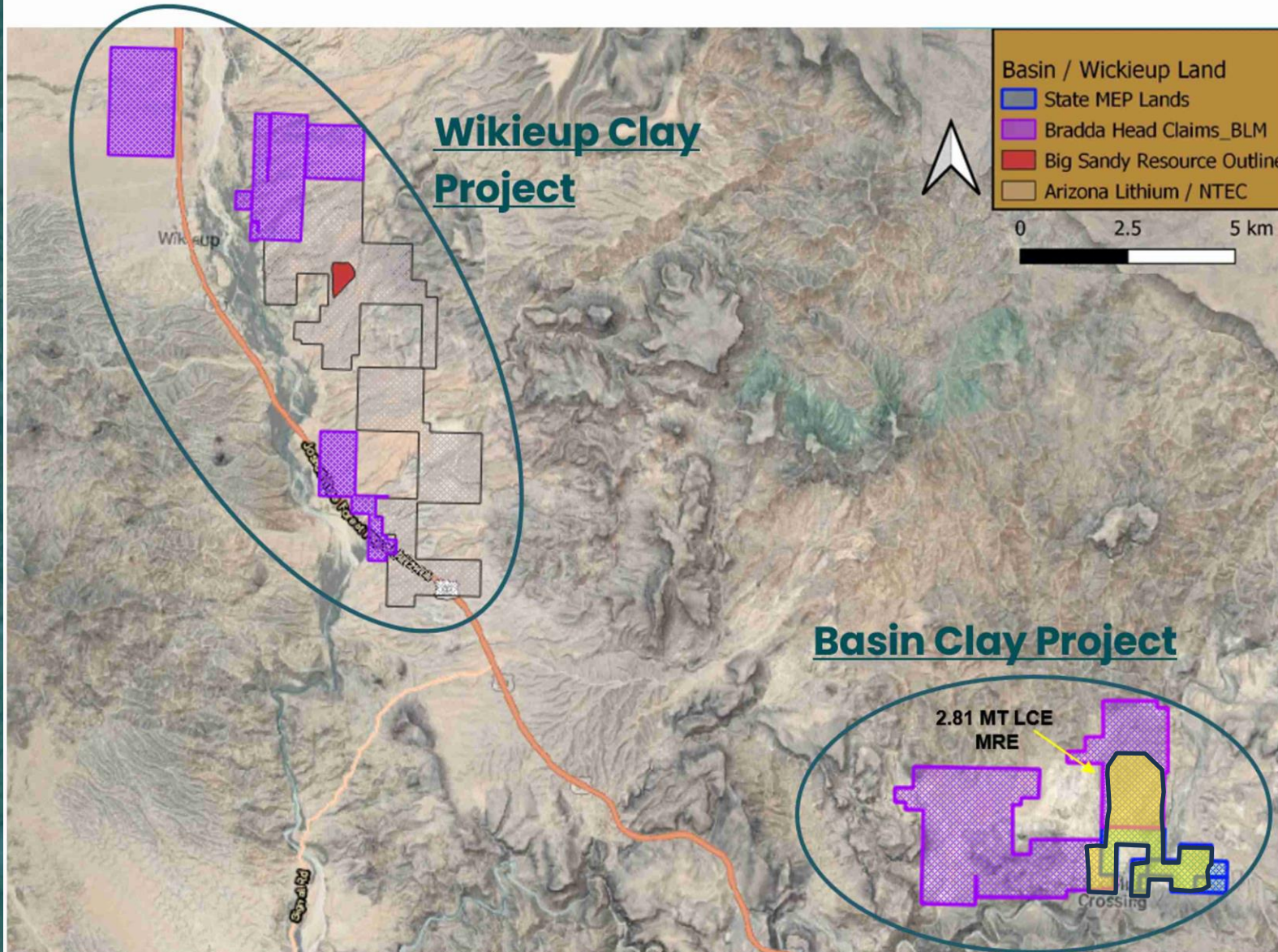
San Domingo: Next Steps...



Prospectivity for positive outcome and path to production supported by:

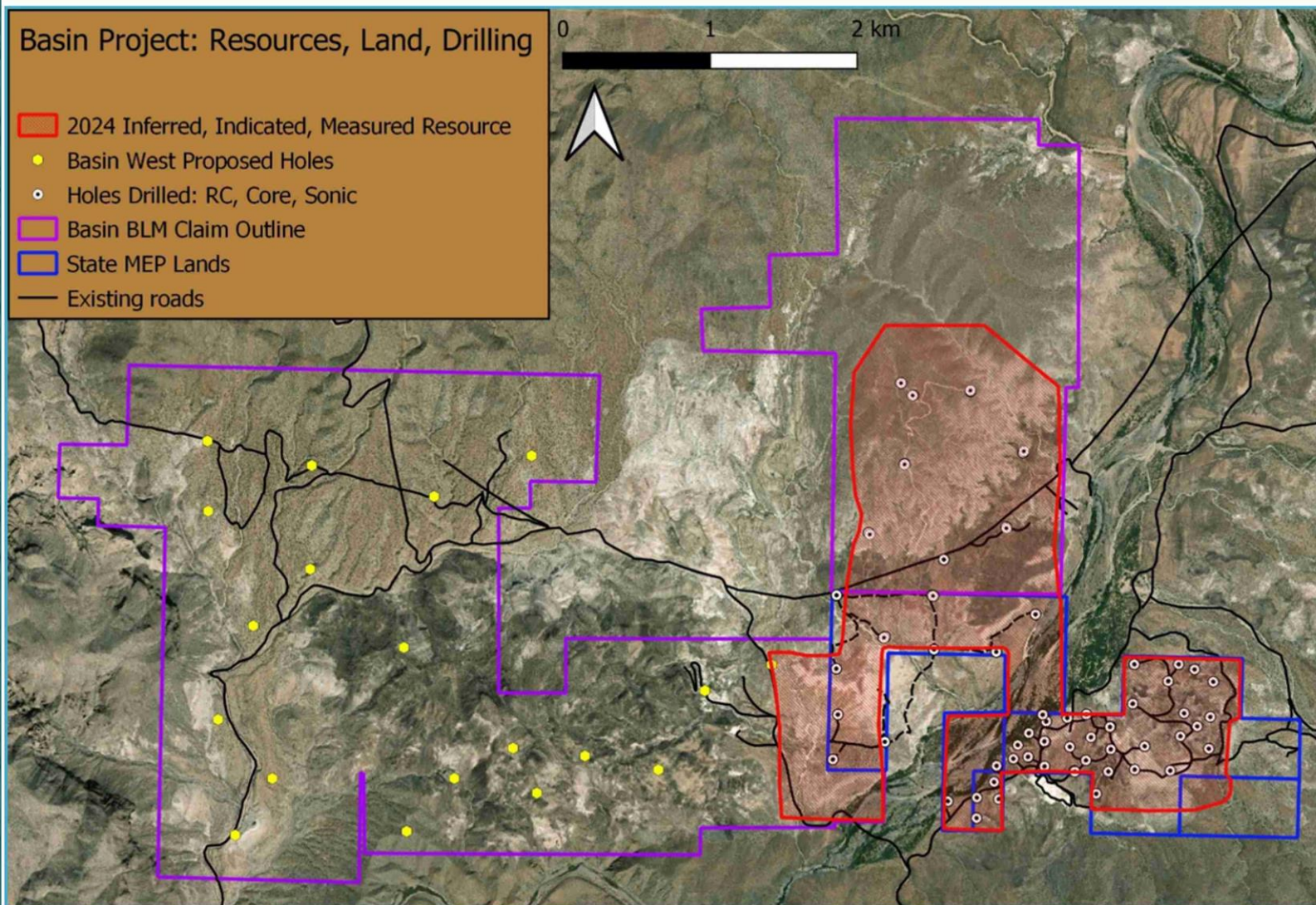
- **Excellent access**, no known environmental or social impacts, strong ESG governance
- Ease of drill hole permitting, BLM and State of Arizona significant allies
- Excellent metallurgical results from Phase I study in 2023 and new study could pave pathway to production

Lithium in Clays: Large Compliant Resource w/ Upside



- BHL Clay Portfolio in Northwest Arizona: Two Quality Projects in close proximity with excellent access, infrastructure, and land positions
- Clay projects across the western US moving forward such as Thacker Pass in Nevada, will be pivotal in the clay space and catalyst for BHL to advance our projects

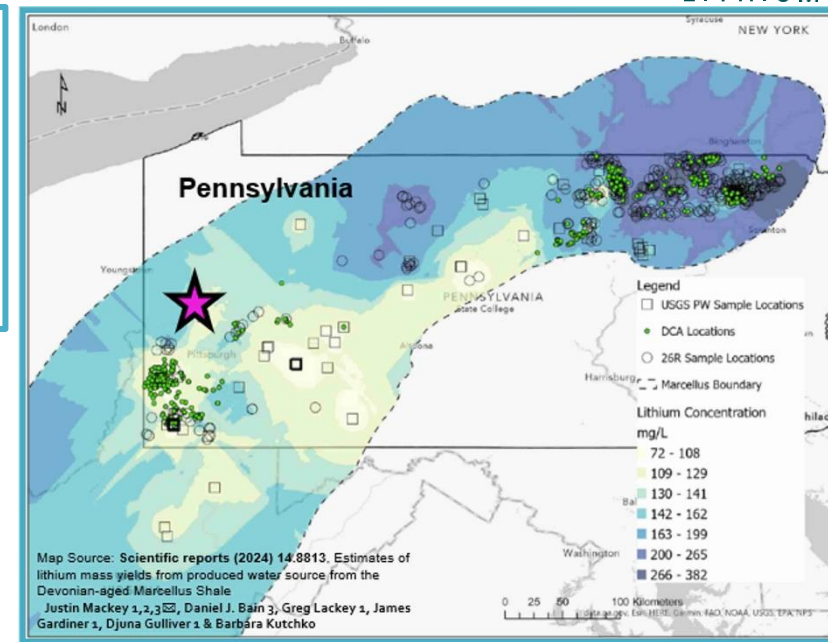
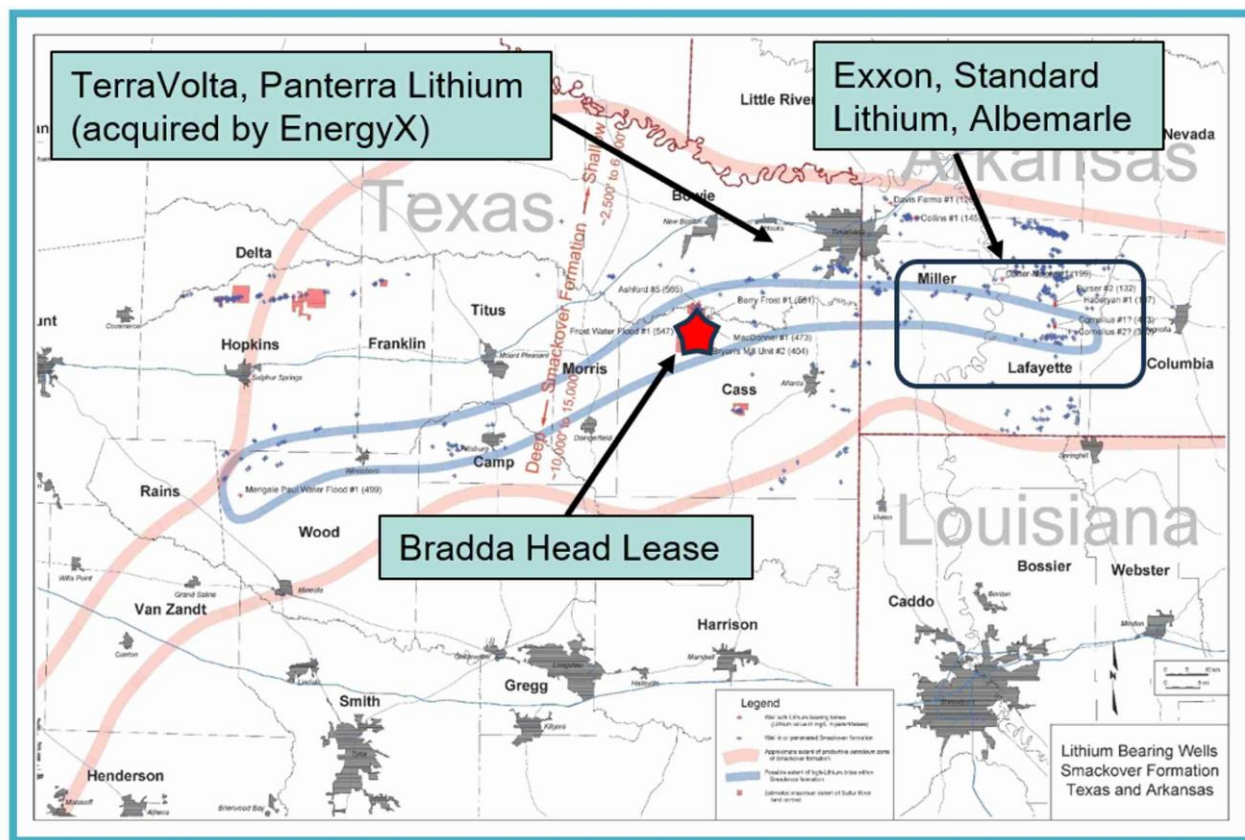
Basin: Lithium in Clays, Arizona Strategic Compliant Lithium Resource



- Basin Clay MRE **2.81MT** LCE MRE at Basin in 2024, 43-101 compliant
- Resource open in all directions, excellent potential on the western half of the property
- LRC Royalty payment of US \$3.0M received in 2024
- Extensive land package at 19.7km²
- Exploration plan of operation (EPO) permit with BLM approved to expand drilling footprint in Basin West, EA anticipated end of 2025

Lithium Oil Brines – Texas and Pennsylvania—Our assets are attracting DLE Technology Companies and the Oil and Gas Majors

- BHL has 589 acres leased, consolidated over 5 targets in Pennsylvania
- Former oil wells sampled **490 and 489 mg/l lithium** adjacent to leased properties
- Oil brine reservoir at 1,600m (5,250 ft) depth, half the depth as Smackover

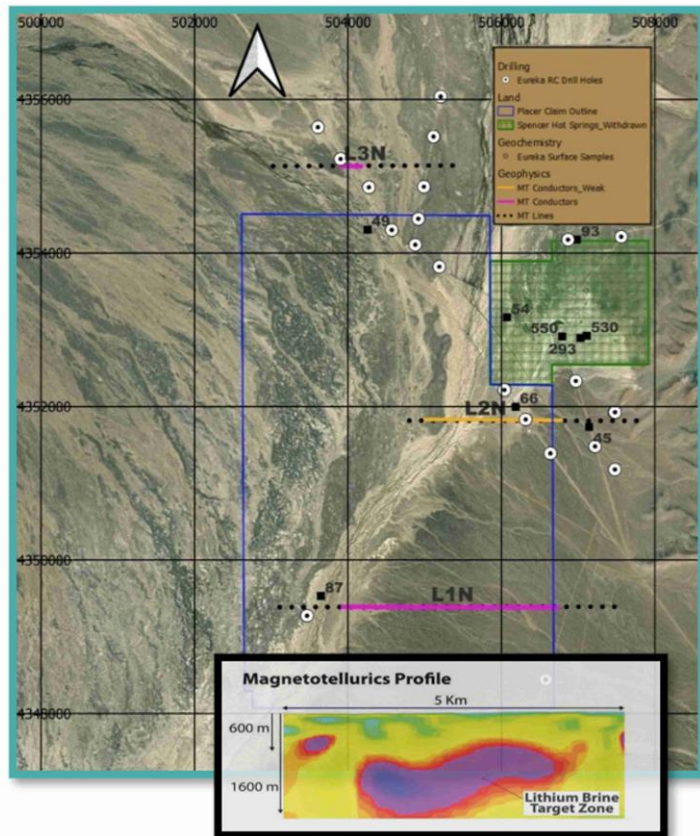


- East Texas, center of Smackover, several historic drill holes detected up to **561 mg/litre Li**
- Standard Lithium, with Equinor recently produced lithium-rich solution (LiCl) from pilot study, sent off for lithium carbonate conversion
- Exxon and Albemarle properties 80km to east in Arkansas, similar lithium grades, advancing DLE technology

Eureka and Wilson: Lithium in Brines, Nevada

Prospective Brine Projects

- Located in Nevada, home to the largest lithium brine mine in the USA: Silver Peak
- Best jurisdiction in the USA for mining and exploration
- Excellent infrastructure, road accessible
- No environmental or socio road blocks
- Positive MT geophysics over both targets, substantial conductive anomalies discovered showing strong resemblance to brines

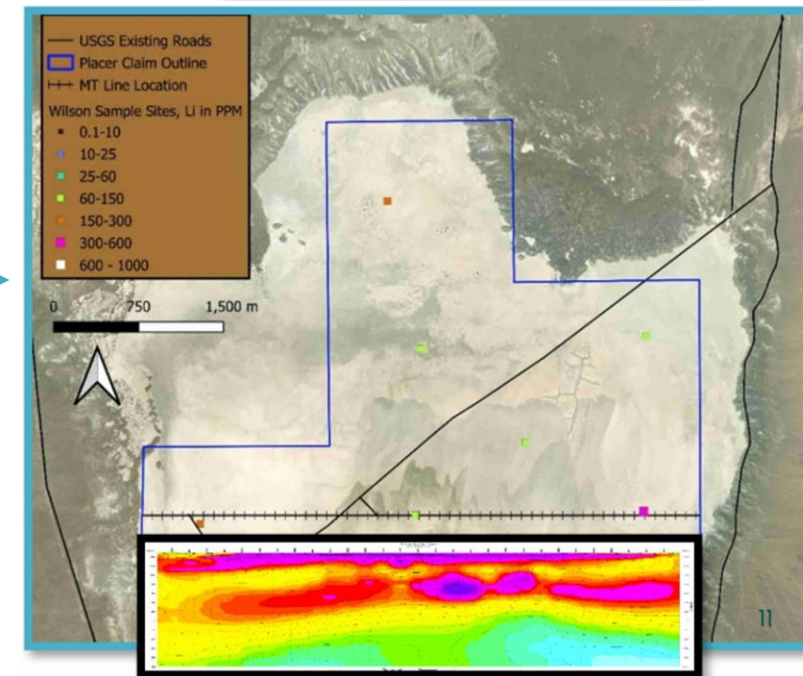
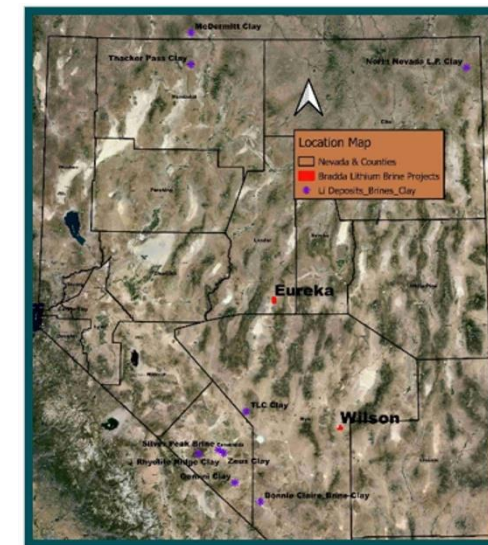


Eureka (left)

- MT geophysics discovered large conductor at 700–900m depth, 6km strike, untested by drilling
- RC drilling conducted on shallow geophysical conductors, surface soil/rock Li anomalies, and proximal to hot spring, values of 550ppm Li

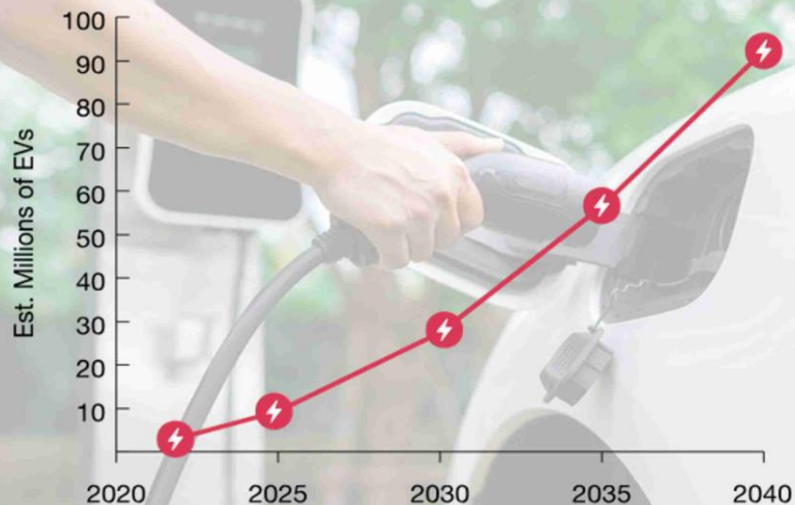
Wilson (right)

- Surface samples, Li anomalies present up to 321ppm Li
- MT (magnetotellurics) geophysics discover shallow & deep conductors anomalies, compelling targets
- Gravity Survey completed, confirms deepening basin towards north



Exploring and Developing US Lithium for US Markets

Number of EVs in US poised to grow by nearly 10-fold through 2030



Source: PwC analysis

Source: Market data from PwC [[US electric vehicle charging market growth: PwC](#)]

**Bradda Head assets:
strategically positioned to
benefit from market
opportunity in the U.S.**

Rapidly Growing Battery Storage and EV Market

- Battery Storage growth forecast of 27% over next 5 years, EVs in the U.S.A. is estimated to hit 27 million by 2030 and 92 million by 2040

Positioned to capitalise on Trumps 'America First' Directive

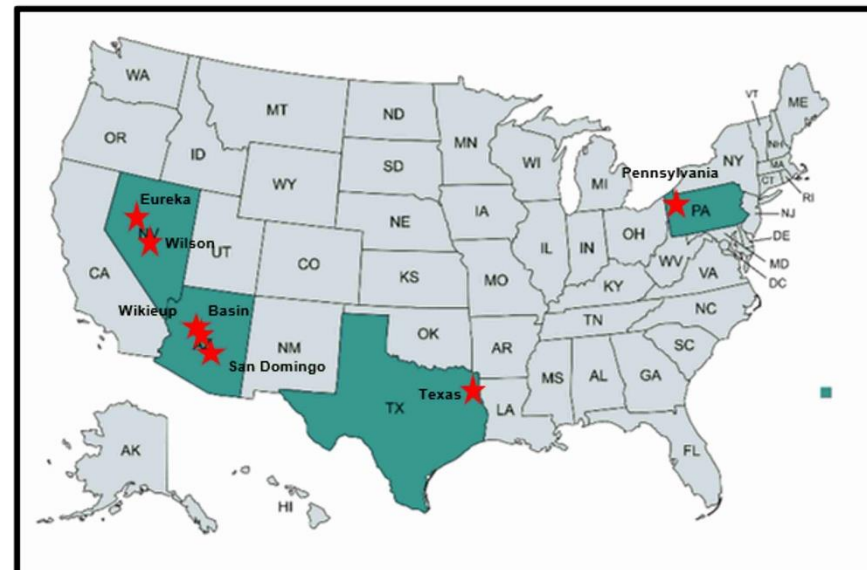
- Fast-tracking mine permits, pro-development, "mine baby mine" messaging, and US on-shoring approach

Capturing the carbon-conscious market

- Targeting lithium end-users significantly reduces environmental footprint, satisfying carbon friendly criteria of EV makers

Moving to 'Made in America'

- Major American corporations looking to develop an entirely U.S. domiciled supply chain and battery storage is growing fast
- Growing interest in geographically concentrated supply chain amidst threat of tariff and trade wars



Strategic Positioning in the USA for Lithium End-Users

Southwest USA Offers:

- **Favourable location** with respect to **power, rail and road transport**
- Energy **infrastructure easily accessible** and in place
- **Multiple lithium end-users located in Western states**, most notably the Tesla Gigafactory

Lithium Deposit Pedigree:

- 1 Silver Peak, Albemarle** (Mkt Cap US\$9.6bn), brine, producing
- 2 Rhyolite Ridge, Ioneer** (Mkt Cap US\$247m), sedimentary, mine permit granted, government debt funding \$996m, offtake agreements with Ford, Toyota-Panasonic
- 3 TLC, American Lithium** (Mkt Cap US\$152m), sedimentary
- 4 Thacker Pass, Lithium Americas** (Mkt Cap US\$917m), sedimentary, under construction, GM JV & offtake agreement and joint venture \$430M, \$2.3B DOE loan



Bradda Head LTD Assets

-  Brine assets
  Sedimentary assets
  Pegmatite asset

Directors and Executive Team



Ian Stalker
Executive
Chairman



Denham Eke
Finance
Director



Jim Mellon
Non-Executive
Director



Alex Borrelli
Independent
NED



**Euan
Jenkins**
Independent
NED



Piotr Shabak
CFO

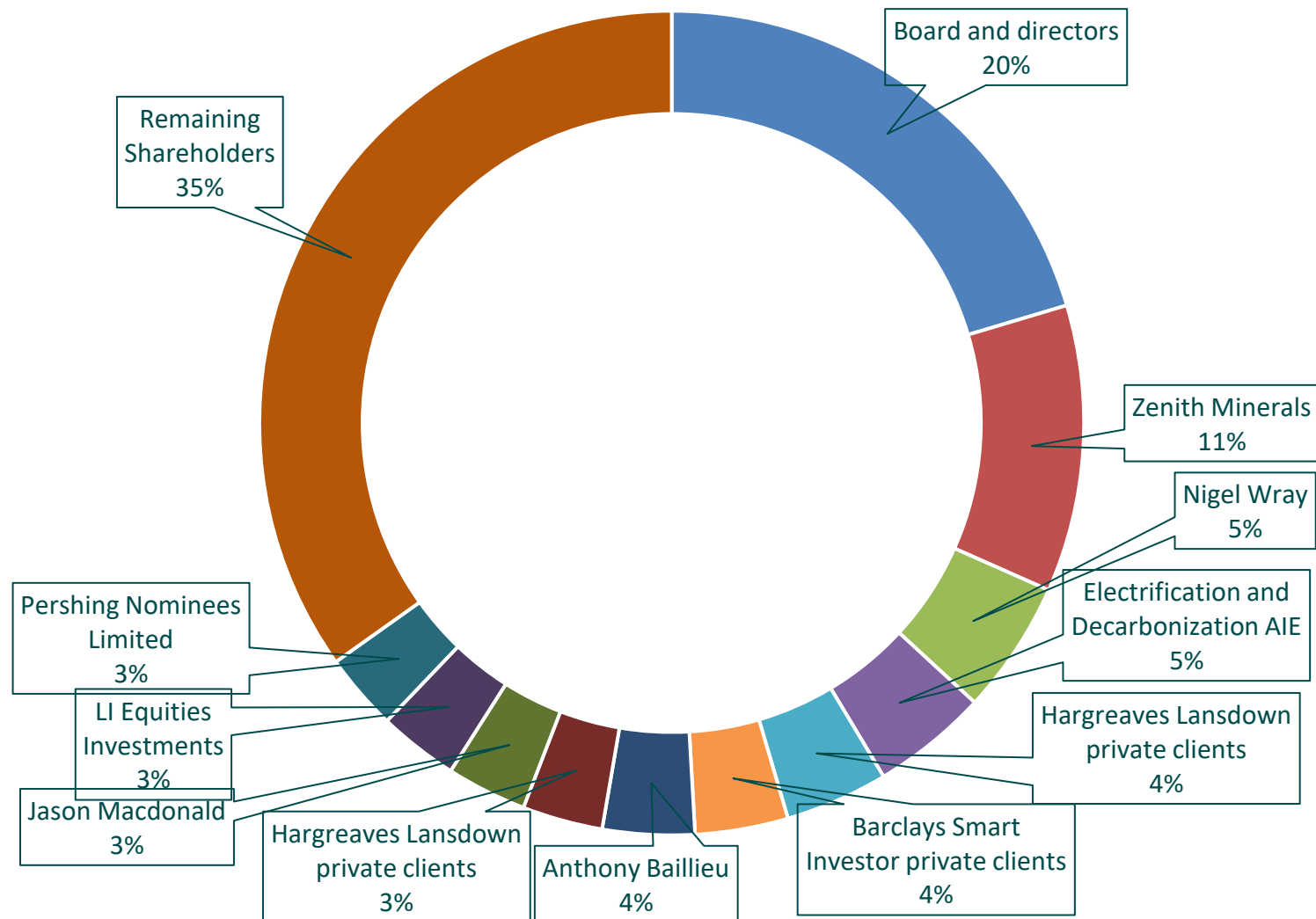


Joey Wilkins
COO

Plus, a strong but nimble operational team on the ground in the USA, driving project growth

Appendix A: Bradda Head – Capital Structure

Based on total issued capital as at 31 August 2025 of 309,609,439 shares



Technical	NOMAD	Brokers	Legal	Audit	Investor Relations
ABH Engineering Inc Damir Cukor +1 (778) 874 8152	Beaumont Cornish Ltd James Biddle +44 (0) 207 628 3396	Shard Capital Partners LLP Isabella Pierre +44 (0) 207 186 9927	Hill Dickinson LLP Fennemore Law	PKF Littlejohn	Tavistock Nick Elwes Josephine Clerkin +44 (0) 207 920 3150

